

Project AXxes

IMA / ECC / CRS / WVI



USAID
FROM THE AMERICAN PEOPLE

ANNEXES

Quarterly Report

Year 2 Quarter 3

April 01 – June 30, 2008

Integrated Health Services Project (Project AXxes)
USAID Cooperative Agreement No: 623-A-00-06-00058-00
Democratic Republic of Congo



with these implementing partners:



ANNEX 1: PROJECT INDICATORS

MCH PERFORMANCE INDICATOR	YEAR 2 TARGET	Y2Q1	Y2Q2	Y2Q3	Denominator	% of Target
1. Number of postpartum/newborn visits within 3 days of birth in USG-assisted programs	174867	43498	47021	58366	43717	134%
2. Number of antenatal care (ANC) visits by skilled providers from USG-assisted facilities	233156	60635	67383	74945	58289	129%
3. Number of people trained in maternal/newborn health through USG-supported programs	482	0	0	0		
4. Number of deliveries with a skilled birth attendant (SBA) in USG-assisted programs	174867	43498	47021	58366	43717	134%
5. Number of people trained in child health and nutrition through USG-supported health area programs	1330	0	0	0		
6. Number of women receiving Active Management of the Third Stage of Labor (AMSTL) through USG-supported programs	174867	10422	17636	39702	43717	91%
7. Number of newborns receiving antibiotic treatment for infection from appropriate health workers through USG-supported programs	13115	1171	2187	2532	3279	77%
8. Number of newborns receiving essential newborn care through USG-supported programs	174867	35827	40478	48038	43717	110%
9. Number of children reached by USG-supported nutrition programs	1166283	146945	128089	154622	291571	53%
10. Number of cases of child pneumonia treated with antibiotics by trained facility or community health workers in USG-supported programs	366446	56416	72700	85349	91611,5	93%
11. Number of children less than 12 months of age who received DPT3 from USG-supported programs	228857	56602	60646	61983	57214	108%
12. Number of children under 5 years of age who received vitamin A from USG-supported programs	1180355	632848	37082	260919	295089	88%
13. Number of cases of child diarrhea treated in USAID-assisted programs	291448	32923	30828	44083	72862	61%

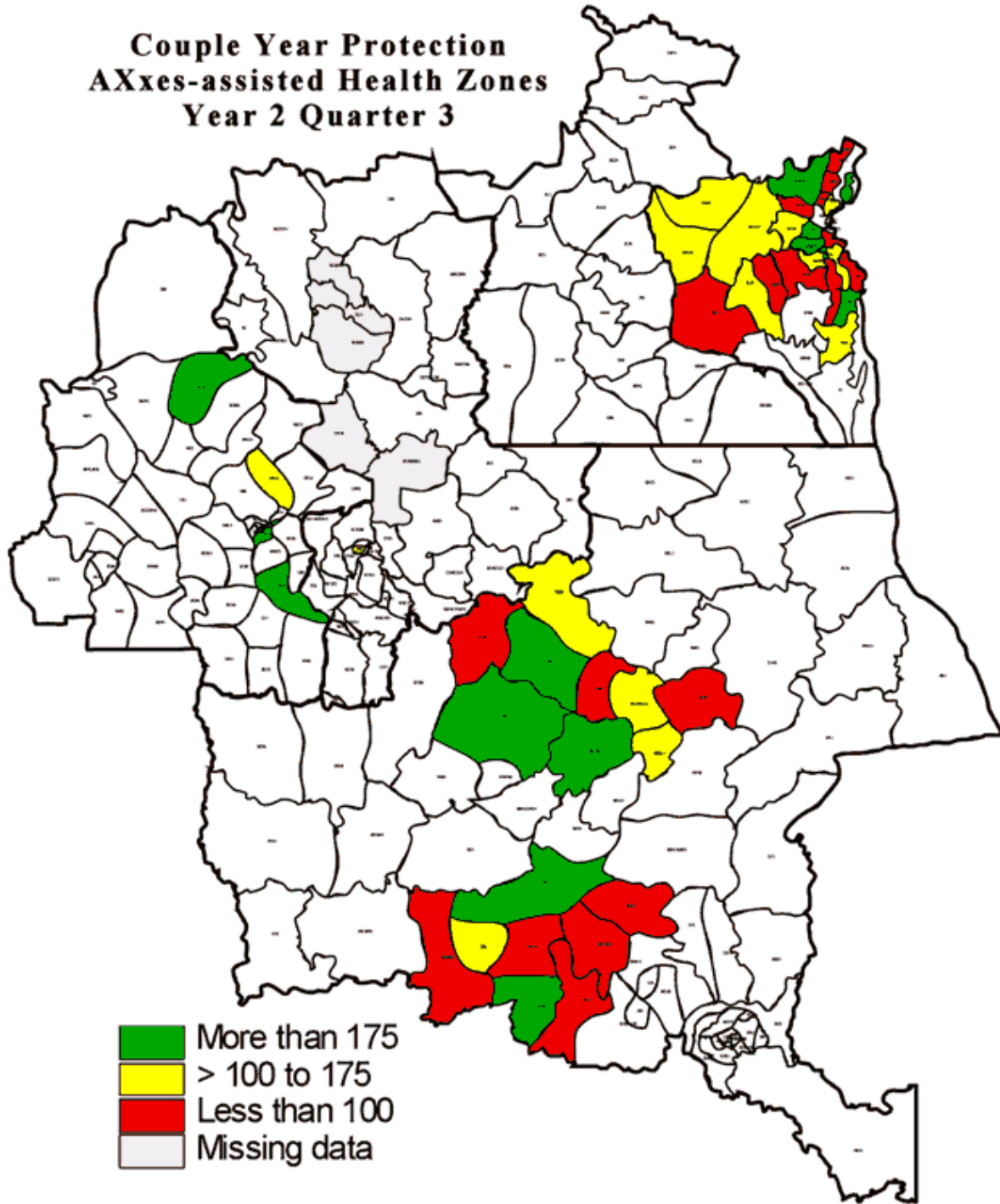
FAMILY PLANNING PERFORMANCE INDICATORS	YEAR 2 TARGET	Y2Q1	Y2Q2	Y2Q3	Denominator	% of Target
1. Couple years of protection (CYP) in USG-supported programs	40000	9048	9498	14861	10000	149%
2. Number of people trained in FP/RH with USG funds	456	0	0	0	114	0%
3. Number of counseling visits for Family Planning/Reproductive Health as a result of USG assistance (Number of individuals counseled on FP/RH is not a standard indicator)	Female	24636	37308	47363	26777	287%
	Male	13355	29267	29390		
		107106	37991	66575		
4. Number of people that have seen or heard a specific USG-supported FP/RH message	145722 8				TBD by LQAS	
5. Number of policies or guidelines developed or changed with USG assistance to improve access to and use of FP/RH services	TBD					
6. Number of new approaches successfully introduced through USG-supported programs	2	1	1	1	1	100%
7. Number of USG-assisted service delivery points providing FP counseling or services	969	434	591	689	969	71%
8. Number of service delivery points reporting stock-outs of any contraceptive commodity offered by SDP	<50	57	124	197	969	20%

MALARIA PERFORMANCE INDICATOR	YEAR 2 TARGET	Y2Q1	Y2Q2	Y2Q3	Denominator	% of Target
1. Number of ITNs distributed that were purchased or subsidized with USG support	180000	0	0	0	45000	0%
2. Number of medical and para-medical practitioners trained in evidence-based clinical guidelines	1330	0	0	0		
3. Monitoring Plan developed	1	1	0	0		
4. Training in Monitoring and Evaluation	1330	0	0	0		
5. Number of service delivery points reporting stock-outs of any commodity offered by the SDP	<50	NA	NA	NA		

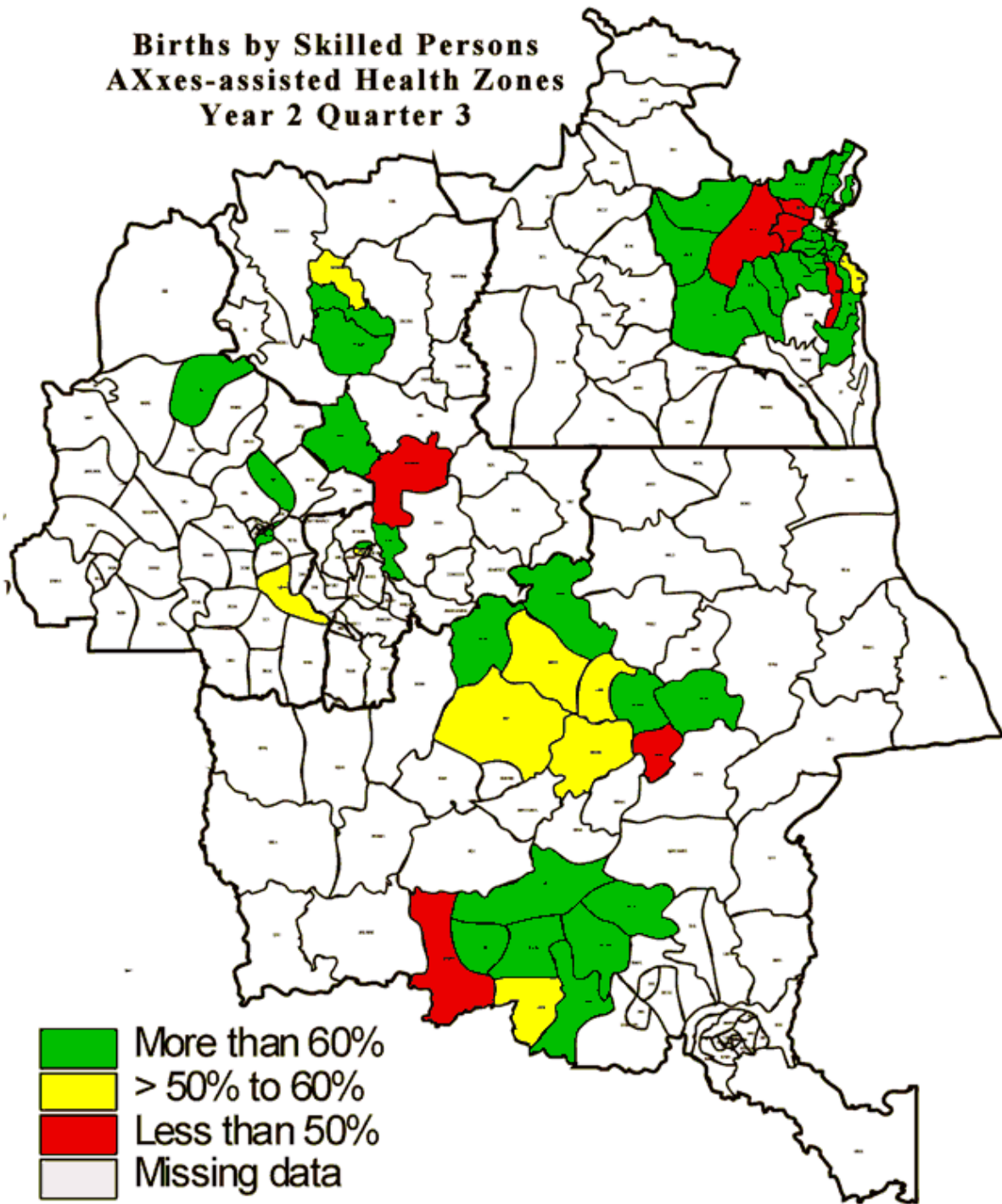
TB PERFORMANCE INDICATOR	ANNUAL TARGET YEAR 2	Y2Q1	Y2Q2	Y2Q3	Denominator	% of Target
1. Case notification rate in new sputum smear positive pulmonary TB cases in USG-supported areas	8743	2416	2589	3058	2186	140%
2. Percent of USG-supported laboratories performing TB microscopy with over 95% correct microscopy results*	70	124	124	124		

* Estimated and needs to be verified

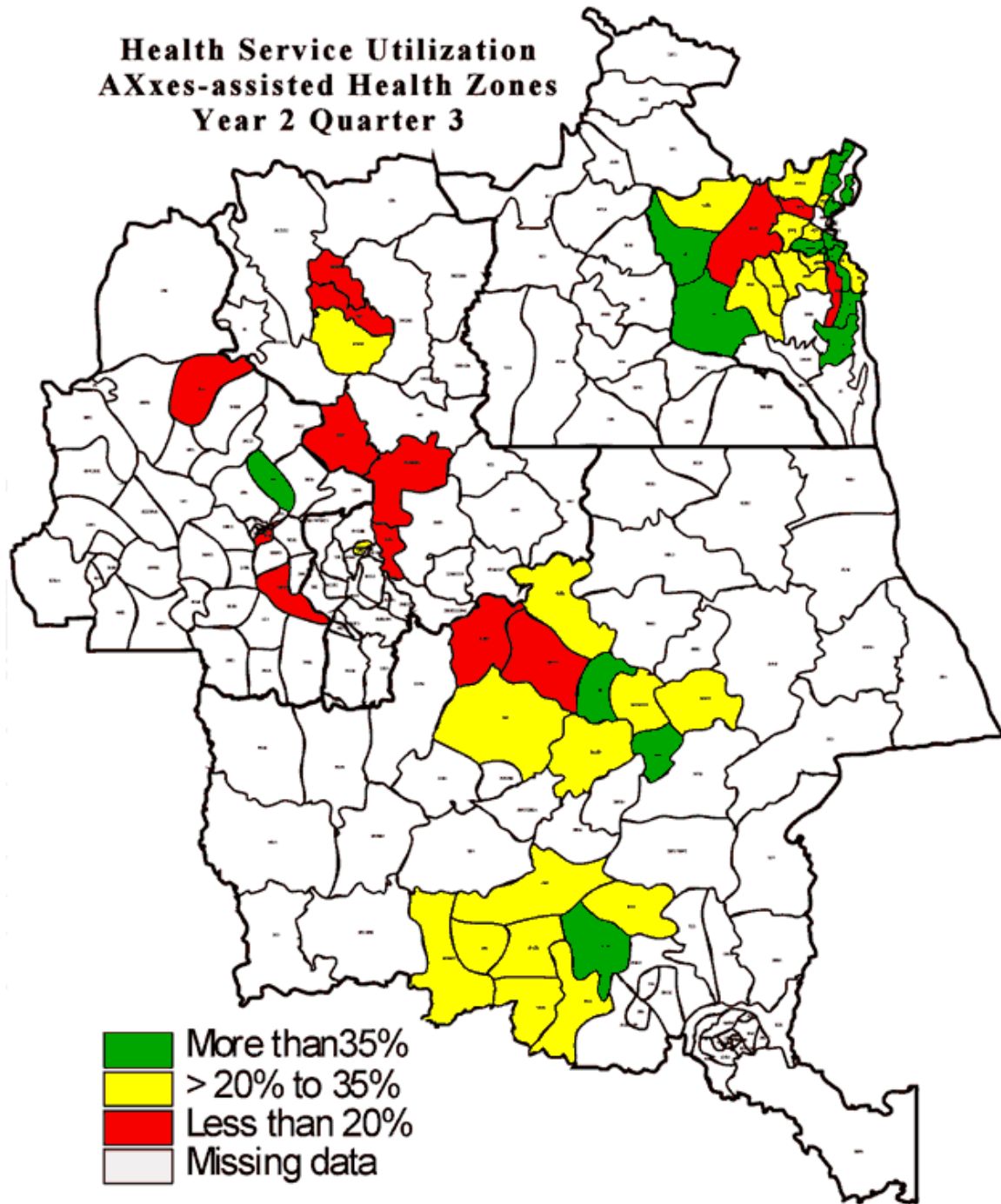
ANNEX 2 : MAP OF COUPLE YEARS PROTECTION



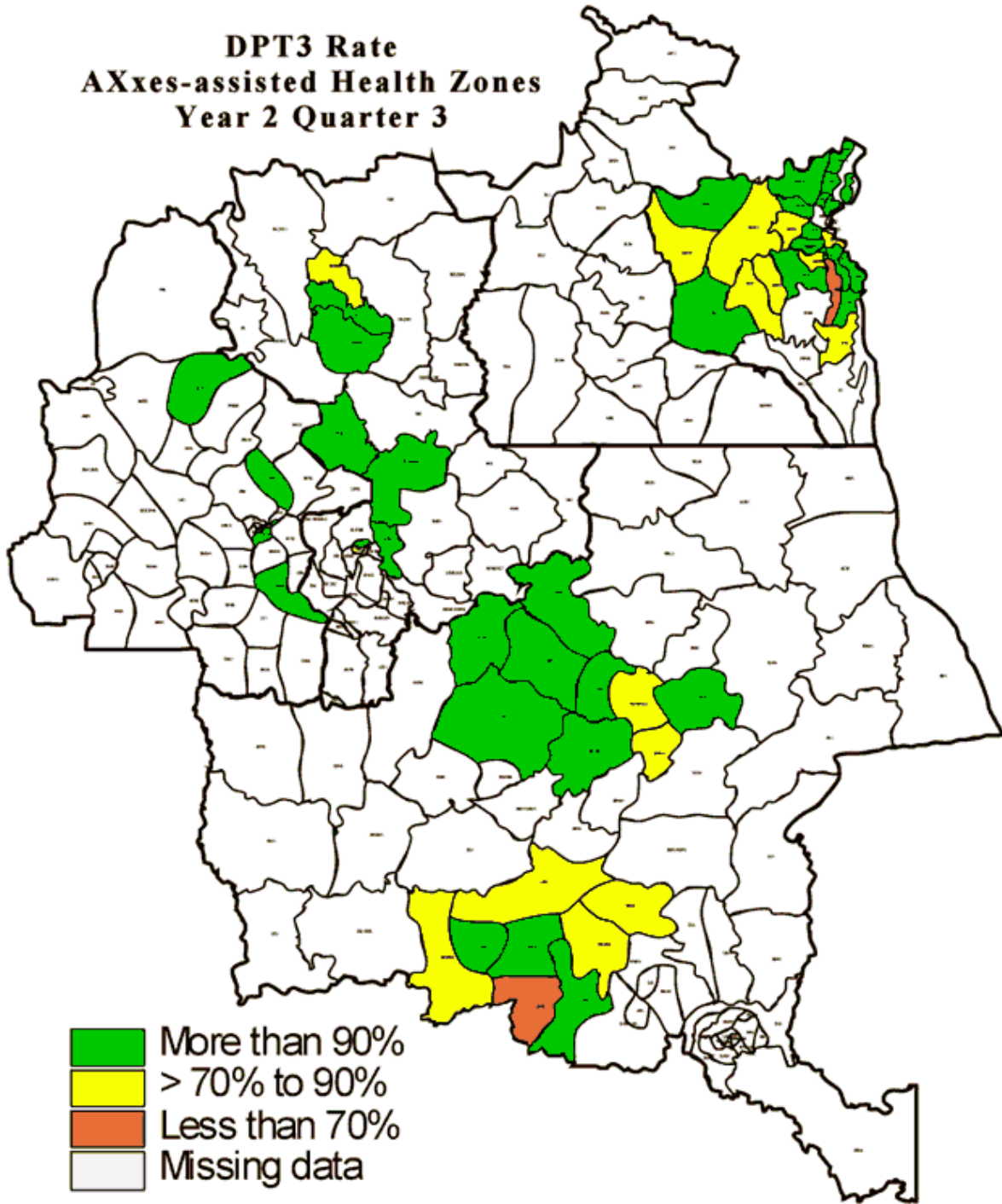
ANNEX 3 : MAP OF ASSISTED BIRTHS



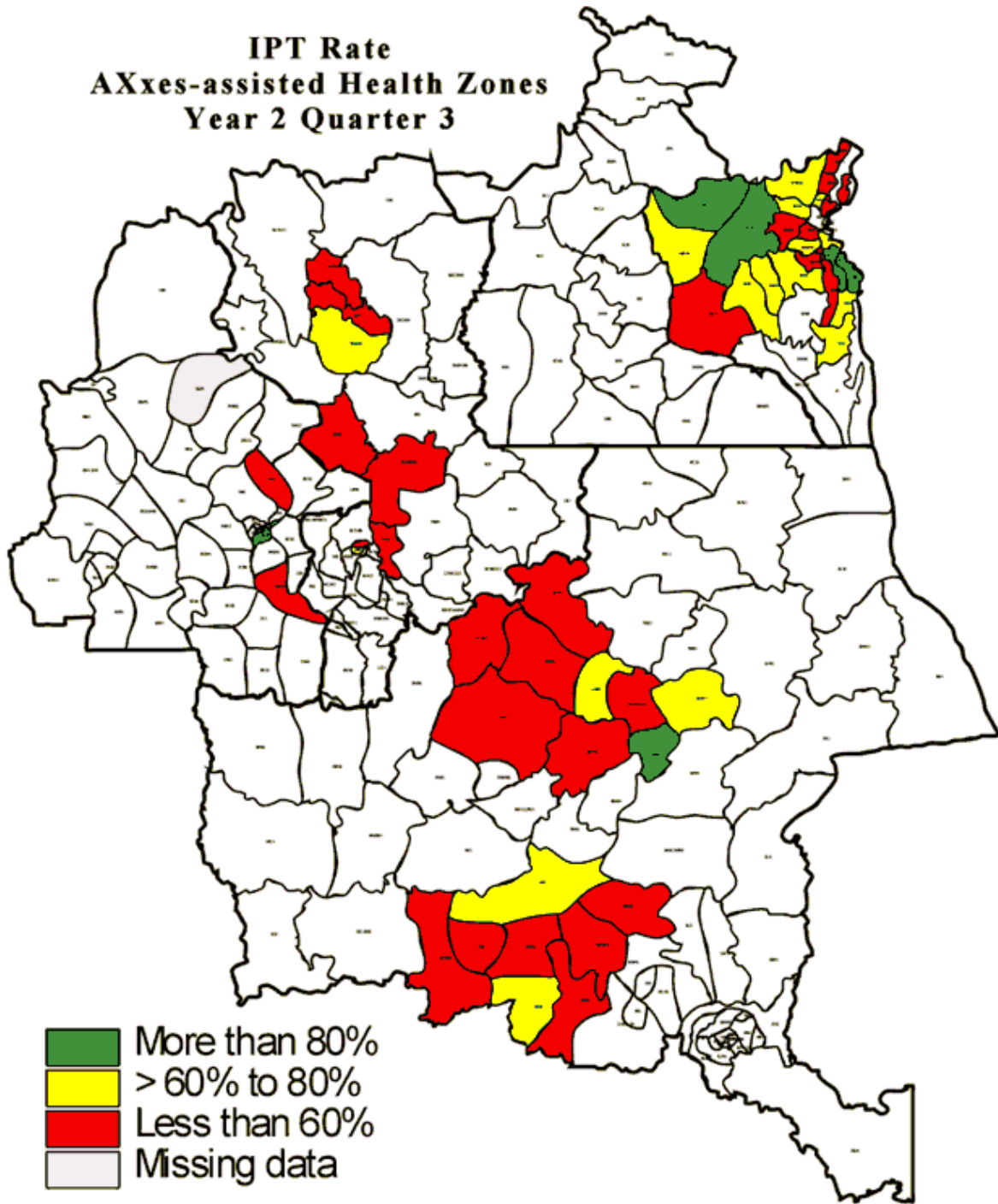
ANNEX 4 : MAP OF HEALTH SERVICE UTILIZATION



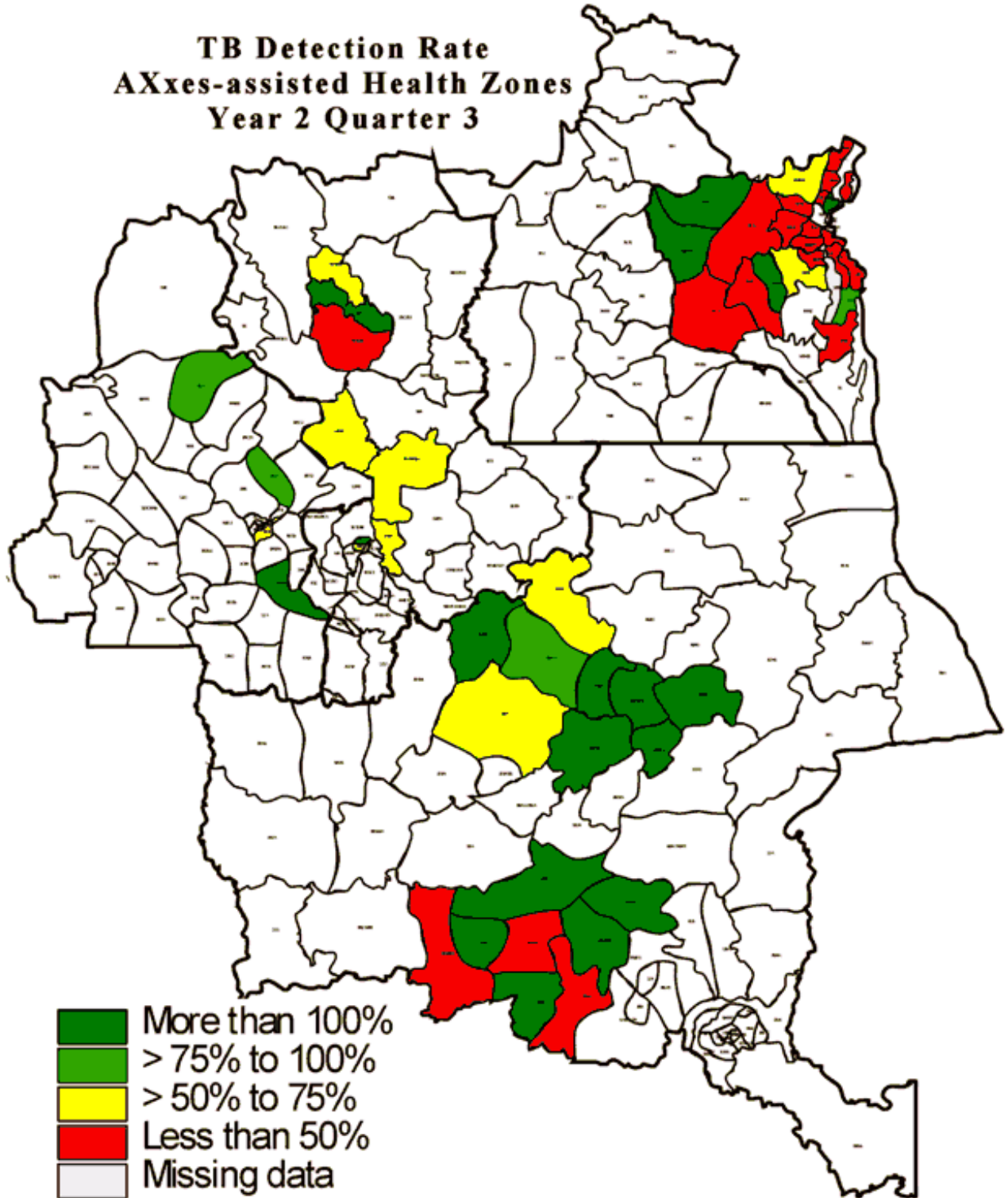
ANNEX 5 : MAP OF DPT3 COVERAGE



ANNEX 6 : MAP OF IPT COVERAGE



ANNEX 7 : MAP OF TUBERCULOSIS DETECTION RATE



ANNEX 8: HEALTH FACILITIES SCHEDULED FOR REHABILITATION

CRS-Assisted HZs -- Health Facilities Scheduled for Rehabilitation						
Province	District	Health Zone	Partner	Structure	Name	% complete
S. Kivu	Sud	Uvira	CRS	CS	Kavimvira	100%
S. Kivu	Sud	Uvira	CRS	CS	Kalundu Etat	100%
S. Kivu	Sud	Uvira	CRS	CS	Kalundu Cepac	100%
S. Kivu	Sud	Ruzizi	CRS	CS	SangeEtat	100%
S. Kivu	Sud	Ruzizi	CRS	CS	Mutarule Maternite	100%
S. Kivu	Sud	Ruzizi	CRS	CS	SangeEtat Maternite	100%
S. Kivu	Sud	Nundu	CRS	CS	Maternite Swima	100%
S. Kivu	Sud	Lemera	CRS	HGR	Bloc Echo/Radiographie	100%
S. Kivu	Sud	Lemera	CRS	CS	Kagaragara	100%
S. Kivu	Sud	Lemera	CRS	CS	Narunanga	100%
S. Kivu	Ouest	Mwenga	CRS	CS	Sungwe	100%
S. Kivu	Ouest	Kamituga	CRS	HGR	Pediatric Urgences	100%
S. Kivu	Ouest	Kamituga	CRS	CS	Kele Sidem	100%
S. Kivu	Ouest	Kamituga	CRS	CS	Kimbaguiste	100%
S. Kivu	Bukavu	Bagira	CRS	HGR	Bagira Maternite	100%
S. Kivu	Centre	Walungu	CRS	CS	Walungu	100%
S. Kivu	Centre	Walungu	CRS	CS	Lurhala	100%
S. Kivu	Bukavu	Kadutu	CRS	CS	Nyamululagira	100%
S. Kivu	Bukavu	Kadutu	CRS	CS	CecaMweze	100%
S. Kivu	Bukavu	Kadutu	CRS	CS	Ciriri Maternite	100%
S. Kivu	Centre	Mubumbano	CRS	CS	HGR Maternite	100%
S. Kivu	Centre	Mubumbano	CRS	CS	Cihusi	100%
S. Kivu	Centre	Mubumbano	CRS	CS	Ibula	100%
S. Kivu	Centre	Mwana	CRS	CS	Buhamba	100%
S. Kivu	Centre	Mwana	CRS	CS	Kakwende	100%
S. Kivu	Centre	Nyangezi	CRS	HGR	Nyangezi	100%
S. Kivu	Ouest	Kitutu	CRS	CS	Kakenemge	100%
S. Kivu	Sud	Uvira	CRS	HGR	Maternite Cesarisee HGR	70%
S. Kivu	Centre	Kaniola	CRS	CS	Cagala	70%
S. Kivu	Ouest	Kitutu	CRS	BCZS	Cobader - Mitobo	70%
S. Kivu	Sud	Hauts Plateaux	CRS	CS	Mugogo	65%
S. Kivu	Sud	Hauts Plateaux	CRS	CS	Kitoga	65%
S. Kivu	Ouest	Kitutu	CRS	HGR	Kitutu	60%
S. Kivu	Ouest	Kitutu	CRS	BCZS	BczsKitutu	60%
S. Kivu	Ouest	Lulingu	CRS	CS	Milenda	50%
S. Kivu	Ouest	Shabunda	CRS	CS	Miswaki	50%
S. Kivu	Ouest	Mulungu	CRS	CS	Nzovu	40%
S. Kivu	Bukavu	Kadutu	CRS	CS	CBCA Nyamugo	30%
S. Kivu	Bukavu	Kadutu	CRS	CS	Neema	30%

CRS-Assisted HZs -- Health Facilities Scheduled for Rehabilitation						
Province	District	Health Zone	Partner	Structure	Name	% complete
S. Kivu	Ouest	Shabunda	CRS	CS	Kasa	30%
S. Kivu	Bukavu	Ibanda	CRS	CS	Croix rouge Nguba	25%
S. Kivu	Bukavu	Ibanda	CRS	CS	Ceca Nguba	20%
S. Kivu	Ouest	Lulingu	CRS	CS	Tchonka	20%
S. Kivu	Sud	Ruzizi	CRS	CH	Maternite Kiliba Cepac	15%
S. Kivu	Ouest	Mwenga	CRS	CS	Iganda	15%
S. Kivu	Ouest	Kalole	CRS	HGR	Itula	15%
S. Kivu	Ouest	Kalole	CRS	HGR	Lukumba	15%
S. Kivu	Ouest	Kalole	CRS	HGR	Kalabula	15%
S. Kivu	Centre	Walungu	CRS	CS	Ikoma	10%
S. Kivu	Ouest	Mulungu	CRS	CS	Kigulube	10%
S. Kivu	Ouest	Mulungu	CRS	HGR	Mulungu	10%
S. Kivu	Sud	Nundu	CRS	CS	Kaboke II	0%
S. Kivu	Sud	Hauts Plateaux	CRS	CS	Katanga	0%
S. Kivu	Ouest	Mwenga	CRS	CS	Kitamba	0%
S. Kivu	Centre	Kaziba	CRS	CS	Ngali	0%
S. Kivu	Centre	Kaziba	CRS	CS	Kafinjo	0%
S. Kivu	Bukavu	Bagira	CRS	CS	Cigurhi	0%
S. Kivu	Centre	Nyangezi	CRS	CS	Kalunga	0%
S. Kivu	Ouest	Lulingu	CRS	CS	Lolo	0%
S. Kivu	Ouest	Shabunda	CRS	CS	Byankungu	0%
Mediane						68%
Moyenne						59%
100%						27
75 à 99%						3
50 à 75%						6
moins de 50%						24

ECC-Assisted HZs -- Health Facilities Scheduled for Rehabilitation						
Province	District	Health Zone	Partner	Structure	Name	% complete
KOC	Kga	Tshikaji	ECC	HGR	Pavillon Matern/pédiatrie	100%
KOC	Kga	Tshikaji	ECC	CS	Mamu Mwilu	100%
KOC	Kga	Tshikaji	ECC	CS	Mbumba	100%
KOC	Kasai	Bulape	ECC	HGR	Pavillon maternité	100%
KOC	Kasai	Bulape	ECC	CS	Yolo	100%
KOC	Kasai	Bulape	ECC	CS	Mbelo	100%
KOC	Lulua	Mutoto	ECC	HGR	Pavillon maternité	100%
KOC	Lulua	Lubondai	ECC	HGR	Pavillon maternité	100%
KOC	Lulua	Lubondai	ECC	CS	Dibwe dieto	100%
KOC	Lulua	Lubondai	ECC	CS	Katambwe	100%
KOR	Tshilenge	Bibanga	ECC	HGR	Pavillon maternité	100%
KOR	Tshilenge	Bibanga	ECC	CS	Lukangu	100%
KOR	Tshilenge	Bibanga	ECC	CS	Viens et Vois Katanda	100%
KOR	Mbuji Mayi	Dibindi	ECC	HGR	Dibindi / Pavillons Hopital	100%
KOR	Mbuji Mayi	Mpokolo	ECC	CSR/HGR	Pavillon maternité	100%
KOR	Mbuji Mayi	Mpokolo	ECC	CSR/HGR	Pavillon maternité	100%
KOR	Mbuji Mayi	Mpokolo	ECC	CHR/HGR	Pavillon BC	100%
Katanga	H-Lomami	Kayamba	ECC	Maternité	Kamayi	100%
Katanga	H-Lomami	Kayamba	ECC	CSR	Kamayi	100%
KOC	Kga	Tshikaji	ECC	CS	Katumba	95%
KOC	Kga	Tshikaji	ECC	CS	Salongo	90%
Katanga	H-Lomami	Malemba-Nkulu	ECC	CS	Songwe	85%
Katanga	H-Lomami	Kinkondja	ECC	CS	Kipamba II	80%
Katanga	H-Lomami	Kinkondja	ECC	CS	Masangu	80%
Katanga	H-Lomami	Songa	ECC	HGR	Pavillon maternité	75%
Katanga	H-Lomami	Kabongo	ECC	HGR	Batiment	75%
Katanga	H-Lomami	Kabongo	ECC	CS	Lwakidi	70%
Katanga	H-Lomami	Kitenge	ECC	HGR	Bâtiment Péd. + Mat.	70%
KOC	Lulua	Lubondai	ECC	CS	Minkulumbu	65%
KOR	Sankuru	Pania Mutombo	ECC	BCZ	BCZ	65%
Katanga	H-Lomami	Songa	ECC	CS	Samba	60%
Katanga	H-Lomami	Malemba-Nkulu	ECC	HGR	3 bâtiments	60%
Katanga	H-Lomami	Malemba-Nkulu	ECC	CS	Kabonsa	60%
Katanga	H-Lomami	Malemba-Nkulu	ECC	CS	Mutombo Lupichi	60%
Katanga	H-Lomami	Malemba-Nkulu	ECC	CS	Kabwe Mulongo	60%
Katanga	H-Lomami	Mukanga	ECC	HGR	Pavillon maternité	60%
Katanga	H-Lomami	Kabongo	ECC	CS	Kyondo	60%
KOR	Sankuru	Lusambo	ECC	HGR	Maternité	55%
KOR	Sankuru	Lusambo	ECC	CSM	Tshileta	55%
Katanga	H-Lomami	Mulongo	ECC	CSR	Kabamba	50%
Katanga	H-Lomami	Mulongo	ECC	CS	Ngoya	50%
Katanga	H-Lomami	Kitenge	ECC	HGR	Pavillon	45%
KOC	Kasai	Bulape	ECC	CS	Mpata Mbamba	35%
KOC	Kasai	Bulape	ECC	CS	Ingongo	35%
KOC	Lulua	Lubondai	ECC	CS	Lubondai II	35%
KOR	Sankuru	Pania Mutombo	ECC	HGR/CHR	Pavillon Hôpital	35%

ECC-Assisted HZs -- Health Facilities Scheduled for Rehabilitation						
Province	District	Health Zone	Partner	Structure	Name	% complete
Katanga	H-Lomami	Kitenge	ECC	CS	Bekisha	20%
KOR	Sankuru	Lodja	ECC	HGR	Batiment	15%
KOR	Sankuru	Lodja	ECC	CS	Elonge	10%
KOR	Tshilenge	Bibanga	ECC	HGR	Pavillon Hopital	0%
KOR	Tshilenge	Bibanga	ECC	CS	Manja	0%
KOR	Sankuru	Lusambo	ECC	CS	Bakuambumba	0%
KOR	Sankuru	Omendjadi	ECC	HGR/CHR	Hiambe	0%
KOR	Sankuru	Omendjadi	ECC	CS	Akongedowo	0%
KOR	Sankuru	Vanga Kete	ECC	HGR/CHR	Utshudi	0%
KOR	Sankuru	Vanga Kete	ECC	CS	Asuku	0%
Katanga	H-Lomami	Mulongo	ECC	CS	Mpemba	0%
Katanga	H-Lomami	Mulongo	ECC	CS	Bukena	0%
Katanga	H-Lomami	Kayamba	ECC	HGR/CSR	Bâtiment	0%
Katanga	H-Lomami	Kayamba	ECC	CS	Kibila	0%
Katanga	H-Lomami	Kayamba	ECC	CS	Kafuku	0%
Katanga	H-Lomami	Lwamba	ECC	HGR		0%
Katanga	H-Lomami	Lwamba	ECC	CS	Kyapwa	0%
Katanga	H-Lomami	Lwamba	ECC	CS	Lubinda	0%
Katanga	H-Lomami	Lwamba	ECC	CS	Kabumbulu	0%
Katanga	H-Lomami	Lwamba	ECC	CS	Mbanza Mbuyu	0%
Katanga	H-Lomami	Songa	ECC	CS	Muleba	0%
Katanga	H-Lomami	Songa	ECC	CS	Kilubi	0%
Katanga	H-Lomami	Songa	ECC	CS	Lusendja	0%
Katanga	H-Lomami	Mukanga	ECC	CS	Mukanga II	0%
Katanga	H-Lomami	Mukanga	ECC	CS	Lubandilu	0%
Katanga	H-Lomami	Kabongo	ECC	HGR	Pavillon	0%
Katanga	H-Lomami	Kabongo	ECC	CS	Lubyay	0%
Katanga	H-Lomami	Kitenge	ECC	CS	Fwila	0%
Katanga	H-Lomami	Kitenge	ECC	CS	Kamunza	0%
Katanga	H-Lomami	Kitenge	ECC	CHR	Makuidi	0%
Katanga	H-Lomami	Kinkondja	ECC	CS	Kibila	0%
Katanga	H-Lomami	Kinkondja	ECC	CS	Mangi II	0%
Mediane						53%
Moyenne						46%
100%						19
75 à 99%						5
50 à 75%						17
moins de 50%						37

WVI-Assisted HZs -- Health Facilities Scheduled for Rehabilitation						
Province	District	Health Zone	Partner	Structure	Name	% complete
Katanga	Kolwezi	Bunkeya	WVI	CS	Kikobe	100%
Katanga	Kolwezi	Dilala	WVI	CS	Musonoi	100%
Katanga	Kolwezi	Dilala	WVI	CS	Luilu	100%
Katanga	Kolwezi	Kanzenze	WVI	CS	Kamoa	100%
Katanga	Kolwezi	Lualaba	WVI	CS	Pwibwe	100%
Katanga	Kolwezi	Lubudi	WVI	HGR	Maternite	100%
Katanga	Kolwezi	Lubudi	WVI	CS	Lubudi	100%
S. Kivu	Nord	Bunyakiri	WVI	HGR	Maternite	100%
S. Kivu	Nord	Bunyakiri	WVI	CS	Lwana	100%
S. Kivu	Nord	Bunyakiri	WVI	CSR	Bitale	100%
S. Kivu	Nord	Kalehe	WVI	HGR	Maternite+Pre Partum:	100%
S. Kivu	Nord	Kalehe	WVI	CS	Lushebere	100%
S. Kivu	Nord	Minova	WVI	CS	Bulenga	100%
S. Kivu	Nord	Minova	WVI	CSR	Kalungu	100%
S. Kivu	Nord	Miti-Murhesa	WVI	CSR	Kavumu	100%
S. Kivu	Nord	Miti-Murhesa	WVI	CS	Buhandahanda	100%
Katanga	Kolwezi	Mutshatsha	WVI	CSR	Maisha	95%
Katanga	Kolwezi	Fungurume	WVI	CSR	Dipeta	90%
Katanga	Kolwezi	Kanzenze	WVI	CSR	Walemba	90%
S. Kivu	Nord	Idjwi	WVI	HGR	Monvu(Maternite)	90%
S. Kivu	Nord	Idjwi	WVI	CS	Mafula	90%
S. Kivu	Nord	Miti-Murhesa	WVI	CH	Murhesa	90%
Katanga	Kolwezi	Manika	WVI	CSR	Manika	85%
S. Kivu	Nord	Idjwi	WVI	CS	Mishimbwe	70%
S. Kivu	Nord	Katana	WVI	CSR	Birava	70%
S. Kivu	Nord	Katana	WVI	CSR	Ihimbi	70%
S. Kivu	Nord	Katana	WVI	HGR	Maternite	65%
S. Kivu	Nord	Kalehe	WVI	CSR	Bushushu	60%
S. Kivu	Nord	Kalonge	WVI	HGR	Maternite+PTME	60%
S. Kivu	Nord	Kalonge	WVI	CSR	Chaminunu	60%
S. Kivu	Nord	Kalonge	WVI	CS	Cholobera	40%
Katanga	Kolwezi	Lubudi	WVI	CS	Mbebe	30%
Katanga	Kolwezi	Bunkeya	WVI	CS	Kateba	20%
Katanga	Kolwezi	Mutshatsha	WVI	CS	Yanva	20%
Katanga	Kolwezi	Fungurume	WVI	CS	Kando	0%
Katanga	Kolwezi	Lualaba	WVI	CS	Mibanze	0%
Katanga	Kolwezi	Manika	WVI	CS	Kasulo	0%
S. Kivu	Nord	Minova	WVI	CS	Nyamasasa	0%
Mediane						90%
Moyenne						74%
100%						16
75 à 99%						7
50 à 75%						7
moins de 50%						8

ANNEX 9: SUPERVISION AT HEALTH ZONES
ANNEX 9: SUPERVISION AT HEALTH ZONES

Sorted from most to least supervised health zones (March, April, May, 2008)

Region	Partner	Health Zone	HGR & Health Centers	Mar-08		Apr-08		May-08		Quarter average
				HC Supv.	%	HC Supv.	%	HC Supv.	%	%
Katanga	ECC	Kitenge	19	22	100%	14	74%	27	142%	105%
K. Oc.	ECC	Mutoto	15	15	100%	15	100%	15	100%	100%
K. Oc.	ECC	Tshikaji	13	13	100%	13	100%	13	100%	100%
K. Or.	ECC	Bibanga	18	18	100%	18	100%	18	100%	100%
K. Or.	ECC	Dibindi	14	14	100%	14	100%	13	93%	98%
S. Kivu	WV	Katana	18	17	94%	17	94%	17	94%	94%
K. Orient	ECC	Vanga Kete Ototo	17	17	100%	14	82%	17	100%	94%
S. Kivu	WV	Miti Murhesa	17	14	82%	17	100%	17	100%	94%
S. Kivu	WV	Idjwi	22	19	86%	22	100%	21	95%	94%
S. Kivu	WV	Kalehe	10	8	80%	10	100%	10	100%	93%
S. Kivu	CRS	Mubumbano	15	14	93%	13	87%	14	93%	91%
Katanga	WV	Mutshatsha	13	9	69%	13	100%	13	100%	90%
S. Kivu	WV	Kalonge	16	14	88%	14	88%	15	94%	90%
K. Or.	ECC	Lusambo	14	14	100%	14	100%	9	64%	88%
Katanga	ECC	Songa	29	26	90%	24	83%	26	90%	87%
K. Oc.	ECC	Lubodayi	21	19	90%	18	86%	18	86%	87%
S. Kivu	CRS	Kitutu	15	12	80%	10	67%	17	113%	87%
K. Orient	ECC	Lodja	22	20	91%	16	73%	21	95%	86%
S. Kivu	WV	Bunyakiri	24	23	96%	20	83%	19	79%	86%
Katanga	ECC	Mukanga	19	16	84%	16	84%	17	89%	86%
Katanga	WV	Kanzenze	14	8	57%	14	100%	14	100%	86%
Katanga	ECC	Malemba Nkulu	18	17	94%	16	89%	13	72%	85%
Katanga	ECC	Mulongo	19	16	84%	16	84%	16	84%	84%
Katanga	ECC	Kinkondja	24	18	75%	24	100%	17	71%	82%
K. Or.	ECC	Mpokolo	16	13	81%	14	88%	12	75%	81%
Katanga	WV	Dilala	10	6	60%	9	90%	9	90%	80%
S. Kivu	CRS	Walungu	24	17	71%	15	63%	24	100%	78%
S. Kivu	WV	Minova	15	12	80%	10	67%	12	80%	76%
K. Oc.	ECC	Bulape	16	13	81%	12	75%	11	69%	75%
Katanga	WV	Lubudi	16	10	63%	13	81%	13	81%	75%
S. Kivu	CRS	Uvira	21	17	81%	15	71%	15	71%	75%
Katanga	ECC	Kabongo	26	16	62%	22	85%	20	77%	74%
Katanga	ECC	Kayamba	13	10	77%	10	77%	9	69%	74%
Katanga	WV	Lualaba	14	7	50%	13	93%	10	71%	71%
K. Orient	ECC	Omendjadi	18	3	17%	17	94%	18	100%	70%
S. Kivu	CRS	Bagira	9	0	0%	9	100%	9	100%	67%
S. Kivu	CRS	Kaziba	13	13	100%	13	100%	0	0%	67%

Region	Partner	Health Zone	HGR & Health Centers	Mar-08		Apr-08		May-08		Quarter average
				HC Supv.	%	HC Supv.	%	HC Supv.	%	%
Katanga	ECC	Lwamba	16	7	44%	10	63%	15	94%	67%
S. Kivu	CRS	Nyangezi	11	11	100%	10	91%	0	0%	64%
K. Or.	ECC	Pania Mutombo	11	10	91%	7	64%	4	36%	64%
S. Kivu	CRS	Lemera	21	20	95%	20	95%	0	0%	63%
Katanga	WV	Fungurume	18	8	44%	11	61%	14	78%	61%
S. Kivu	CRS	Nundu	21	18	86%	0	0%	19	90%	59%
S. Kivu	CRS	Ruzizi	16	14	88%	14	88%	0	0%	58%
S. Kivu	CRS	Kalole	27	22	81%	25	93%	0	0%	58%
Katanga	WV	Bunkeya	7	4	57%	3	43%	5	71%	57%
S. Kivu	CRS	Kaniola	12	8	67%	12	100%	0	0%	56%
Katanga	WV	Manika	24	12	50%	13	54%	13	54%	53%
S. Kivu	CRS	Hauts Plateaux	20	10	50%	0	0%	16	80%	43%
S. Kivu	CRS	Kamituga	20	13	65%	10	50%	0	0%	38%
S. Kivu	CRS	Ibanda	14	0	0%	10	71%	6	43%	38%
S. Kivu	CRS	Mwana	9	0	0%	9	100%	0	0%	33%
S. Kivu	CRS	Mwenga	17	0	0%	12	71%	0	0%	24%
S. Kivu	CRS	Mulungu	20	0	0%	8	40%	0	0%	13%
S. Kivu	CRS	Kadutu	16	0	0%	0	0%	0	0%	0%
S. Kivu	CRS	Lulingu	15	0	0%	0	0%	0	0%	0%
S. Kivu	CRS	Shabunda	15	0	0%	0	0%	0	0%	0%

ANNEX 10: SUPERVISION BY HEALTH ZONE AND IMPLEMENTING PARTNER

District	Part ner	Area	Nbr	Apr-08		May-08		Jun-08		Quarter average
				Supv.	%	Supv.	%	Supv.	%	%
HAUT LOMAMI	ECC	HZs	9	6	67%	5	56%	4	44%	56%
HAUT LOMAMI	ECC	HGRs	8	4	50%	4	50%	4	50%	50%
HAUT LOMAMI	ECC	HCs	18	7	39%	18	100%	8	44%	61%
MBUJI MAYI	ECC	HZs	4	3	75%	4	100%	4	100%	92%
MBUJI MAYI	ECC	HGRs	4	3	75%	4	100%	4	100%	92%
MBUJI MAYI	ECC	HCs	8	6	75%	8	100%	8	100%	92%
TSHILENGE	ECC	HZs	1	1	100%	1	100%	1	100%	100%
TSHILENGE	ECC	HGRs	1	1	100%	1	100%	1	100%	100%
TSHILENGE	ECC	HCs	2	2	100%	2	100%	2	100%	100%
POOL KANANGA	ECC	HZs	4	4	100%	4	100%	4	100%	100%
POOL KANANGA	ECC	HGRs	4	4	100%	4	100%	4	100%	100%
POOL KANANGA	ECC	HCs	16	16	100%	15	94%	16	100%	98%
SANKURU	ECC	HZs	3	2	67%	1	33%	1	33%	44%
SANKURU	ECC	HGRs	3	3	100%	1	33%	1	33%	56%
SANKURU	ECC	HCs	6	6	100%	2	33%	6	100%	78%
BUKAVU	CRS	HZs	3	2	67%	3	100%	3	100%	89%
BUKAVU	CRS	HGRs	3	2	67%	1	33%	1	33%	44%
BUKAVU	CRS	HCs	6	4	67%	4	67%	3	50%	61%
S.K CENTRE	CRS	HZs	6	5	83%	6	100%	6	100%	94%
S.K CENTRE	CRS	HGRs	6	4	67%	5	83%	4	67%	72%
S.K CENTRE	CRS	HCs	12	10	83%	12	100%	7	58%	81%
S.K OUEST	CRS	HZs	7	4	57%	5	71%	5	71%	67%
S.K OUEST	CRS	HGRs	6	5	83%	5	83%	5	83%	83%
S.K OUEST	CRS	HCs	14	11	79%	13	93%	14	100%	90%
S.K SUD	CRS	HZs	5	4	80%	3	60%	4	80%	73%
S.K SUD	CRS	HGRs	3	2	67%	2	67%	3	100%	78%
S.K SUD	CRS	HCs	10	8	80%	10	100%	10	100%	93%
S.K NORD	WVI	HZs	7	7	100%	7	100%	7	100%	100%
S.K NORD	WVI	HGRs	8	8	100%	8	100%	8	100%	100%
S.K NORD	WVI	HCs	112	11	10%	14	13%	14	13%	12%
KOLWEZI	WVI	HZs	8	6	75%	6	75%	8	100%	83%
KOLWEZI	WVI	HGRs	6	4	67%	4	67%	6	100%	78%
KOLWEZI	WVI	HCs	99	22	22%	22	22%	20	20%	22%
Average Supervision by Partner			412	187	45%	204	50%	196	48%	47%

ANNEX 11: FUNCTIONALITY OF CODESAS

Region	Partner	Health Zone	# HCs	# CODESA	% HCs w CODESA	% Women	IGA
K. Oc.	ECC	Bulape	15	11	73%	0%	OUI (Palmiers nains, niébé et arachide)
K. Oc.	ECC	Lubondayi	19	12	63%	11%	OUI (Palmiers nains, niébé et arachide)
K. Oc.	ECC	Mutoto	14	14	100%	7%	OUI (Palmiers nains, niébé et arachide)
K. Oc.	ECC	Tshikaji	12	10	83%	8%	OUI (Palmiers nains, niébé et arachide)
K. Or.	ECC	Bibanga	17	16	94%	29%	non
K. Or.	ECC	Dibindi	13	13	100%	15%	non
K. Or.	ECC	Lodja	22	14	64%	0%	non
K. Or.	ECC	Lusambo	13	13	100%	0%	non
K. Or.	ECC	Mpokolo	15	15	100%	53%	non
K. Or.	ECC	Omendjadi	18	18	100%	0%	non
K. Or.	ECC	Pania Mutombo	10	6	60%	0%	non
K. Or.	ECC	Vanga Kete Ototo	17	12	71%	0%	non
Katanga	ECC	Kabongo	26	26	100%	0%	non
Katanga	ECC	Kayamba	13	13	100%	0%	non
Katanga	ECC	Kinkondja	24	18	75%	8%	non
Katanga	ECC	Kitenge	27	25	93%	7%	non
Katanga	ECC	Lwamba	16	12	75%	0%	non
Katanga	ECC	Malemba Nkulu	18	13	72%	0%	non
Katanga	ECC	Mukanga	19	16	84%	0%	non
Katanga	ECC	Mulongo	19	15	79%	53%	non
Katanga	ECC	Songa	29	28	97%	0%	non
Katanga	WV	Bunkeya	7	5	71%	35%	
Katanga	WV	Dilala	10	10	100%	22%	
Katanga	WV	Fungurume	17	11	65%	40%	
Katanga	WV	Kanzenze	15	12	80%	20%	
Katanga	WV	Lualaba	14	14	100%	55%	
Katanga	WV	Lubudi	16	8	50%	40%	
Katanga	WV	Manika	13	13	100%	35%	
Katanga	WV	Mutshatsha	13	13	100%	25%	
S. Kivu	WV	Bunyakiri	24	21	88%	22,29	
S. Kivu	WV	Idjwi	21	21	100%	34,2	
S. Kivu	WV	Kalehe	10	10	100%	12,84	
S. Kivu	WV	Kalonge	16	16	100%	21,85	
S. Kivu	WV	Katana	17	17	100%	29,7	
S. Kivu	WV	Minova	16	16	100%	21	
S. Kivu	WV	Miti Murhesa	16	16	100%	31,3	
S. Kivu	CRS	Bagira	8	8	100%	38%	
S. Kivu	CRS	Hauts Plateaux	20	4	20%	0%	
S. Kivu	CRS	Ibanda	12	12	100%	33%	
S. Kivu	CRS	Kadutu	11	11	100%	9%	
S. Kivu	CRS	Kalole	27	27	100%	4%	
S. Kivu	CRS	Kamituga	20	18	90%	30%	

S. Kivu	CRS	Kaniola	11	11	100%	9%	
S. Kivu	CRS	Kaziba	12	12	100%	0%	
S. Kivu	CRS	Kitutu	22	22	100%	0%	
S. Kivu	CRS	Lemera	20	20	100%	0%	
S. Kivu	CRS	Lulingu	20	20	100%	0%	
S. Kivu	CRS	Mubumbano	15	15	100%	27%	
S. Kivu	CRS	Mulungu	20	20	100%	0%	
S. Kivu	CRS	Mwana	13	7	54%	0%	
S. Kivu	CRS	Mwenga	17	16	94%	6%	
S. Kivu	CRS	Nundu	21	21	100%	5%	
S. Kivu	CRS	Nyangezi	10	10	100%	0%	
S. Kivu	CRS	Ruzizi	16	16	100%	6%	
S. Kivu	CRS	Shabunda	21	18	86%	5%	
S. Kivu	CRS	Uvira	21	21	100%	14%	
S. Kivu	CRS	Walungu	22	22	100%	18%	
		TOTALS	960	854	89%		

ANNEX 12: DRUG CREDIT UTILIZATION

Project AXxes Health Zone Credits Year 1				HGR						CS					
SubReg	Health Zone	Partner	DEPOT	Credit	Credits utilisés	Montant à recycler	Montant recyclé	% recyclag Utilisa-tion	Solde lignes de crédit	Credit	Credits utilisés	Montants à recycler	Montants recyclé	% recyclag Utilisa-tion	Solde lignes de crédit
Bukavu	Ibanda	CRS	BDOM	6,779	2,080	1,664	-	0%	4,699	27,115	2,288	1,144	-	0.0%	24,827
Bukavu	Kadutu	CRS	BDOM	8,871	3,417	2,734	2,044	60%	5,454	12,419	4,480	2,240	1,199	26.8%	7,939
Centre	Mwana	CRS	BDOM	3,928	1,002	801		0%	2,927	6,285	743	371	-	0.0%	5,542
Centre	Nyangezi	CRS	BDOM	2,895	906	725	300	33%	1,989	11,580	5,587	2,794	580	10.4%	5,993
Centre	Kaziba	CRS	BDOM	3,003	2,213	1,771	700	32%	789	9,008	2,464	1,232	-	0.0%	6,544
Centre	Walungu	CRS	BDOM	-	-	-	-		-	6,026	2,346	1,173	-	0.0%	3,680
Centre	Kaniola	CRS	BDOM	3,766	268	215		0%	3,498	6,026	4,092	2,046	-	0.0%	1,934
Centre	Mubumbano	CRS	BDOM	-	-	-			-	7,282	2,700	1,350	-	0.0%	4,582
Ouest	Kitutu	CRS	BDOM	3,511	2,978	2,382	312	10%	533	14,044	12,921	6,461	2,185	16.9%	1,122
Ouest	Lulingu	CRS	BDOM	4,577	2,560	2,048		0%	2,017	18,307	7,360	3,680	-	0.0%	10,946
Ouest	Kalole	CRS	BDOM	5,185	1,173	938		0%	4,012	16,591	4,433	2,217	-	0.0%	12,158
Ouest	Shabunda	CRS	BDOM	5,185	3,403	2,722		0%	1,782	20,739	6,897	3,449	-	0.0%	13,842
Ouest	Mulungu	CRS	BDOM	5,855	-	-	-		5,855	23,418	5,236	2,618	-	0.0%	18,183
Ouest	Kamituga	CRS	BDOM	5,209	1,626	1,301	400	25%	3,583	20,835	2,122	1,061	-	0.0%	18,712
Ouest	Mwenga	CRS	BDOM	-	-	-	-		-	21,409	2,408	1,204	-	0.0%	19,001
Sud	Uvira	CRS	BDOM	-	-	-	-		-	6,069	6,024	3,012	300	5.0%	45
Sud	Bijombo	CRS	BDOM	3,378	1,499	1,200		0%	1,878	12,160	6,887	3,444	-	0.0%	5,272
Sud	Nundu	CRS	BDOM	4,058	1,401	1,121		0%	2,657	16,230	6,692	3,346	-	0.0%	9,538
Sud	Lemera	CRS	BDOM	-	-	-	-		-	14,774	6,907	3,454	-	0.0%	7,867
Sud	Ruzizi	CRS	BDOM	7,153	2,083	1,666		0%	5,070	7,153	3,454	1,727	-	0.0%	3,699
Sud	Bagira	CRS	BDOM	4,653	631	505	240	38%	4,023	18,614	4,913	2,457	783	15.9%	13,700
Nord	Kalonge	WV	BDOM	2,553	1,173	938	-	0%	1,380	10,211	3,031	1,516	-	0%	7,180
Nord	Kalehe	WV	BDOM	1,902	-	-	-		1,902	7,606	-	-	-	0%	7,606
Nord	Minova	WV	BDOM	2,025	1,016	812	-	0%	1,009	8,100	3,852	1,926	-	0%	4,248
Nord	Bunyakiri	WV	BDOM	2,094	796	637	235	30%	1,298	16,756	5,739	2,870	205	4%	11,017
Nord	Katana	WV	BDOM	4,600	1,063	850	-	0%	3,537	18,400	3,001	1,500	-	0%	15,399
Nord	Miti	WV	BDOM	4,930	1,031	825	-	0%	3,898	19,719	3,515	1,757	950	27%	16,204
Nord	Idjwi	WV	BDOM	5,621	1,231	985	-	0%	4,390	22,485	5,743	2,872	-	0%	16,742
Kolwezi	Kanzenze	WV	Kolwezi	1,377	436	349	346	79%	941	5,508	3,673	1,836	1,328	36%	1,836

Project AXxes Health Zone Credits Year 1				HGR						CS					
SubReg	Health Zone	Partner	DEPOT	Credit	Credits utilisés	Montant à recycler	Montant recyclé	% recyclag Utilisation	Solde lignes de crédit	Credit	Credits utilisés	Montants à recycler	Montants recyclé	% recyclag Utilisation	Solde lignes de crédit
Kolwezi	Bunkeya	WV	Kolwezi	1,471	361	288	265	73%	1,110	5,883	2,482	1,241	402	16%	3,401
Kolwezi	Mutshatsha	WV	Kolwezi	1,956	456	365	-	0%	1,500	7,823	2,641	1,321	417	16%	5,182
Kolwezi	Lualaba	WV	Kolwezi	2,169		-	-		2,169	8,677	2,040	1,020	426	21%	6,637
Kolwezi	Lubudi	WV	Kolwezi	2,236	976	781	-	0%	1,260	8,942	4,490	2,245	436	10%	4,452
Kolwezi	Fungurume	WV	Kolwezi	2,676	474	379	-	0%	2,201	10,702	3,033	1,516	334	11%	7,669
Kolwezi	Dilala	WV	Kolwezi	2,816		-	-		2,816	11,265	2,177	1,089		0%	9,088
Kolwezi	Manika	WV	Kolwezi	4,911	896	717	-	0%	4,015	19,645	2,659	1,330	2,170	82%	16,986
Haut Lomami	Kabongo	ECC	Kamina	6,493	3,391	2,713	-	0%	3,102	25,784	9,262	4,631	-	0%	16,522
Haut Lomami	Kayamba	ECC	Kamina	2,587	2,459	1,968	1,000	41%	128	10,271	9,188	4,594	1,750	19%	1,083
Haut Lomami	Kinkondja	ECC	Kamina	7,039	2,171	1,737	-	0%	4,868	27,950	13,782	6,891	1,035	8%	14,168
Haut Lomami	Kitenge	ECC	Kamina	6,578	3,907	3,125	603	15%	2,671	26,122	9,037	4,519	250	3%	17,085
Haut Lomami	Lwamba	ECC	Kamina	2,613	2,468	1,974	-	0%	145	10,377	5,955	2,977	570	10%	4,422
Haut Lomami	MalembaNkulu	ECC	Kamina	5,055	3,919	3,135	-	0%	1,136	20,072	9,097	4,548	629	7%	10,975
Haut Lomami	Mukanga	ECC	Kamina	6,233	3,500	2,800	-	0%	2,733	24,750	10,175	5,087	-	0%	14,575
Haut Lomami	Mulongo	ECC	Kamina	-	-	-	-	0%	-	6,037	6,063	3,031	-	0%	(26)
Haut Lomami	Songa	ECC	Kamina	3,755	3,714	2,971	571	15%	41	14,904	13,717	6,858	4,010	29%	1,187
Tshilenge	Bibanga	ECC	Kananga	3,961	2,270	1,816	600	26%	1,691	15,843	4,053	2,027	489	12%	11,790
Mbujimayi	Mpokolo	ECC	Kananga	10,408	3,635	2,908	224	6%	6,772	41,630	8,722	4,361	272	3%	32,908
Mbujimayi	Dibindi	ECC	Kananga	-	-	-	-	0%	-	-	-	-	-	0%	-
Mbujimayi	Lusambo	ECC	Kananga	2,997	1,677	1,341	663	40%	1,320	11,988	2,848	1,424	501	18%	9,140
Mbujimayi	Pania Mutombo	ECC	Kananga	1,629	1,142	914	-	0%	487	6,516	2,588	1,294	233	9%	3,928
Kananga	Bulape	ECC	Kananga	2,953	2,248	1,799	350	16%	705	11,811	7,297	3,648	1,244	17%	4,514
Kananga	Lubondayi	ECC	Kananga	4,031	1,295	1,036	778	60%	2,736	16,123	4,025	2,012	1,700	42%	12,098
Kananga	Mutoto	ECC	Kananga	-	-	-	-	0%	-	-	-	-	-	\$0	-
Kananga	Tshikaji	ECC	Kananga	2,830	632	505	632	100%	2,198	11,320	3,337	1,668	500	15%	7,983
Sankuru	Lodja	ECC	FodesaLodja	5,727	2,841	2,273	305	11%	2,886	22,906	3,980	1,990	-	0%	18,926
Sankuru	Omendjadi	ECC	FodesaLodja	3,953	1,852	1,482	300	16%	2,101	15,812	4,023	2,012	-	0%	11,789
Sankuru	Vanga Kete Ot.	ECC	FodesaLodja	3,108	826	661	150	18%	2,282	12,432	2,115	1,058	-	0%	10,317
TOTAL				203,289	81,095	64,876	11,017	14%	122,194	810,456	278,296	139,148	24,897	9%	532,160

ANNEX 13: Costing and Tarification Information by Health Zone and Implementing Partner

Region	Partner	Health Zone	Episodic payment		Set Tarification HGR		Planned preferential Tarifications at HGR		Actual preferential tarification	
			Child	Adult	Consultation	Pediatric	Consultation	Pediatrics	Consultation	Pediatric
K. Oc.	ECC	Bulape			\$ 1.80	\$ 1.80	\$ 1.80	\$ 1.80	\$ 1.80	\$ 1.80
K. Oc.	ECC	Lubondayi			\$ 0.50	\$ 0.50	\$ 0.50	\$ 0.50	\$ 3.00	\$ 3.00
K. Oc.	ECC	Mutoto	\$ 0.09	\$ 0.18	\$ 1.00	Gratuit				
K. Oc.	ECC	Tshikaji			\$ 1.00	\$ 1.00	\$ 1.00	\$ 1.00	\$ 1.00	\$ 1.00
K. Or.	ECC	Bibanga			\$ 2.00	\$ 4.00				
K. Or.	ECC	Dibindi	\$ 3.00	\$ 3.00	\$ 2.00	\$ 5.00	\$ 5.00	\$ 5.00	\$ 2.00	\$ 5.00
K. Or.	ECC	Lodja			\$ 1.00	\$ 1.00				
K. Or.	ECC	Lusambo	is not applied							
K. Or.	ECC	Mpokolo	is not applied							
K. Or.	ECC	Omendjadi			\$0.50	\$0.50				
K. Or.	ECC	Pania Mutombo	is not applied							
K. Or.	ECC	Vanga Kete Ototo			\$ 1.00	\$ 1.00				
Katanga	ECC	Kabongo	\$1.36	\$1.63	\$0.62	\$1.07			\$0.45	\$0.45
Katanga	ECC	Kavamba	\$0.90	\$1.45	\$0.90	\$0.90			\$0.36	\$0.36
Katanga	ECC	Kinkondja	\$0.72	\$1.27	\$0.35	Gratuit			Gratuit	Gratuit
Katanga	ECC	Kitenge	\$0.90	\$1.36	\$0.17	\$0.89	\$1.33	\$2.50	Gratuit	Gratuit
Katanga	ECC	Lwamba	\$1.00	\$1.00	\$0.18				\$0.18	\$0.18
Katanga	ECC	Malemba Nkulu	\$1.09	\$1.09	\$1.09	\$1.78			?	?
Katanga	ECC	Mukanga	\$0.54	\$1.00	\$0.45				Gratuit	Gratuit
Katanga	ECC	Mulongo	\$1.09	\$1.09	\$0.54					
Katanga	ECC	Songa	\$0.90	\$1.36	\$1.81	\$2.50	\$0.90	\$1.27	Gratuit	Gratuit
Katanga	WV	Bunkeya	\$1.20	\$1.20	\$1.50	\$10.00	\$1.20	\$7.50	\$1.20	\$1.20
Katanga	WV	Dilala	\$1.50	\$1.50	\$10.00	\$10.00	\$10.00	\$10.00	\$1.50	\$1.50
Katanga	WV	Fungurume	\$1.50	\$2.00	\$4.00	\$4.00	\$3.00	\$3.00	\$4.00	\$4.00
Katanga	WV	Kanzenze	\$1.20	\$1.50	\$4.00	\$10.00	\$3.00	\$7.50	\$4.00	\$3.00
Katanga	WV	Lualaba	\$1.50	\$2.00	\$4.00	-	\$2.00	\$2.00	\$2.00	\$2.00
Katanga	WV	Lubudi	\$1.00	\$1.50	\$2.00	\$12.50	\$1.50	\$10.00	\$1.50	\$7.50
Katanga	WV	Manika	-	-	\$10.00	\$10.00	\$10.00	\$10.00	\$10.00	\$7.00
Katanga	WV	Mutshatsha	\$1.50	\$1.50	\$4.00	\$3.00	\$3.00	\$2.00	\$4.00	\$3.00
S. Kivu	WV	Bunyakiri	\$1.00	\$2.00	\$4.00	\$10.00	\$3.00	\$7.50	\$4.00	\$10.00
S. Kivu	WV	Idjwi	\$0.75	\$1.50	\$3.00	\$12.50	\$2.25	\$9.43	1.5\$	5\$
S. Kivu	WV	Kalehe	\$0.20	\$0.50	\$1.00	\$0.00	\$0.00	\$0.00	\$0.00	\$0.00
S. Kivu	WV	Kalonge	\$1.00	\$2.00	\$3.00	\$12.50	\$2.25	\$9.43	\$3.00	\$12.50
S. Kivu	WV	Katana	\$0.60	\$1.50	\$4.00	\$12.50	\$2.00	\$6.25	\$2.00	\$6.25
S. Kivu	WV	Minova	\$1.00	\$2.00	\$3.00	\$10.00	\$2.25	\$7.50	2\$	5\$
S. Kivu	WV	Miti Murhesa	\$1.00	\$2.00	\$3.00	\$10.00	\$2.25	\$7.50	-	-
S. Kivu	CRS	Bagira	\$1.50	\$3.00	\$4.00	\$25.00	\$4.00	\$25.00	\$1.50	\$25.00
S. Kivu	CRS	Hauts Plateaux	\$1.00	\$3.00	\$2.00	\$1.50	\$2.00	\$1.50	\$1.00	\$1.50
S. Kivu	CRS	Ibanda	\$1.00	\$3.00	\$6.00	\$6.00	\$6.00	\$6.00	\$1.00	\$6.00
S. Kivu	CRS	Kadutu	\$0.50	\$1.00	\$5.00	\$12.50	\$5.00	\$12.50	\$0.50	\$12.50
S. Kivu	CRS	Kalole	\$0.90	\$1.80	\$2.70	\$15.00	\$2.70	\$15.00	\$0.90	\$15.00
S. Kivu	CRS	Kamituga	\$1.00	\$2.00	\$6.00	\$15.00	\$6.00	\$15.00	\$1.00	\$15.00
S. Kivu	CRS	Kaniola	\$0.55	\$1.15	\$2.50	\$13.00	\$2.50	\$13.00	\$0.55	\$13.00
S. Kivu	CRS	Kaziba	\$0.55	\$1.55	\$2.00	\$10.00	\$2.00	\$10.00	\$0.55	\$10.00
S. Kivu	CRS	Kitutu	\$0.90	\$1.80	\$2.70	\$15.00	\$2.70	\$15.00	\$0.90	\$15.00
S. Kivu	CRS	Lemera	\$1.00	\$1.50	\$6.00	\$15.00	\$6.00	\$15.00	\$1.00	\$15.00
S. Kivu	CRS	Lulingu	\$0.45	\$0.90	\$2.00	\$1.00	\$2.00	\$1.00	\$0.45	\$1.00
S. Kivu	CRS	Mubumbano	\$0.55	\$1.15	\$2.50	\$14.50	\$2.50	\$14.50	\$0.55	\$14.50
S. Kivu	CRS	Mulungu	\$0.55	\$1.00					\$0.55	
S. Kivu	CRS	Mwana	\$0.55	\$1.15	\$3.00	\$10.00	\$3.00	\$10.00	\$0.55	\$10.00
S. Kivu	CRS	Mwenga	\$0.50	\$1.00	\$2.00	\$12.00	\$2.00	\$12.00	\$0.50	\$12.00
S. Kivu	CRS	Nundu	\$1.00	\$1.50	\$5.00	\$3.50	\$5.00	\$3.50	\$1.00	\$3.50
S. Kivu	CRS	Nyangezi	\$0.55	\$1.15	\$3.00		\$3.00		\$0.55	
S. Kivu	CRS	Ruzizi	\$0.50	\$1.00	\$1.00	\$2.00	\$1.00	\$2.00	\$0.50	\$2.00
S. Kivu	CRS	Shabunda	\$0.45	\$0.90	\$2.00	\$1.00	\$2.00	\$1.00	\$0.45	\$1.00
S. Kivu	CRS	Uvira	\$0.50	\$1.00	\$2.00	\$2.00	\$2.00	\$2.00	\$0.50	\$2.00
S. Kivu	CRS	Walungu	\$1.00	\$1.50	\$3.00	\$13.00	\$3.00	\$13.00	\$1.00	\$13.00

ANNEX 15: MATERIAL AND EQUIPMENT DISTRIBUTION

Region	Health Zone	CS	Matériel/Équipement/RCZ							S/MIS/MSIN							SECUTRANS/LABO					
			Médecins	Techniciens	Soins inf.	Pharmaciens	RTI	Informaticiens	III	Radioplateaux	SMS/CS	SMS/BCZ	SMS/HCAR	Ardoles/gammes A.B.C.	Jeux de référence	Registres	Matériels de curatives	Matériels A.V.V.	Fiches de Maintenance	HIV tests Determinés	Fiches Techniques	Securité transfusionnelle
S. Kivu	Kadutu	11	3	1	7	0	0	0	712	39	42	11	2831	27	100	35	1,200	42	2	2	3	
S. Kivu	Mwana	19	3	1	3	0	1	0	720	36	36	19	2892	23	324	77	400	27	1	1	3	
S. Kivu	Nyangezi	10	3	1	5	0	1	0	330	39	36	10	1,801	14	196	59	400	0	1	2	3	
S. Kivu	Kariba	15	3	1	5	0	1	0	456	36	36	15	3,862	21	317	92	100	0	1	0	3	
S. Kivu	Walungu	11	3	1	17	0	1	0	927	36	36	11	5,063	44	416	118	400	85	1	1	3	
S. Kivu	Kaniola	7	2	1	5	0	1	0	512	36	36	7	2831	29	256	49	100	0	1	2	3	
S. Kivu	Mubumbano	10	3	1	3	0	1	0	475	36	36	10	2,451	37	342	83	100	0	1	0	3	
S. Kivu	Kamituga	20	3	1	15	0	1	0	736	36	36	20	3,012	42	286	177	500	0	2	1	3	
S. Kivu	Mwenga	22	3	1	17	0	0	0	508	36	36	22	3,482	25	267	171	200	0	1	1	2	
S. Kivu	Uvira	25	2	1	22	0	1	0	849	36	36	25	3,512	39	260	87	9,100	58	5	2	3	
S. Kivu	Bujombo	10	3	1	15	0	1	0	912	36	36	10	4,163	49	184	63	0	85	1	2	2	
S. Kivu	Nundu	15	3	1	33	0	1	0	904	36	36	15	5,132	64	290	110	3,800	81	3	1	2	
S. Kivu	Lemera	20	4	1	21	0	1	0	673	36	36	20	4,103	45	280	81	1,000	70	1	1	3	
S. Kivu	Ruzizi	15	3	1	20	0	1	0	544	36	36	15	2,361	33	230	62	1,400	46	2	1	3	
S. Kivu	Ibanda	8	3	1	13	0	0	0	535	39	36	8	861	31	110	38	800	58	2	1	3	
S. Kivu	Bagira	22	3	1	9	0	0	0	363	39	36	22	2,241	19	74	25	300	31	1	1	3	
S. Kivu	Kitutu	26	3	2	6	0	1	0	787	24	24	26	1,663	43	346	120	0	0	1	2	3	
S. Kivu	Lulingu	15	2	1	0	0	1	0	560	24	24	15	3,403	45	330	113	0	77	1	1	3	
S. Kivu	Kalole	15	2	1	10	0	1	0	852	24	24	15	1,814	47	396	136	0	116	1	2	3	
S. Kivu	Shabunda	21	1	1	0	0	1	0	638	24	24	21	1,542	39	311	107	0	70	1	1	3	
S. Kivu	Mulungu	22	2	1	0	0	1	0	772	24	24	22	1,633	42	331	113	0	30	1	1	3	
Distributed to HZs			57	22	226	0	17	0	13,765	708	702	339	60,653	758	5,646	1,916	19,800	876	27	25	60	
Quantity Received by CRS			59	22	240	0	17	0	13,765	708	702	339	60,653	758	5,646	1,926	27,600	876	27	25	60	
Balance			2	0	14	0	0	0	0	0	0	0	0	0	0	10	7800	0	0	0	0	
% Distributed			97%	100%	94%	0%	100%		100%	100%	100%	0%	100%	100%	100%	99%	72%	100%	101%	100%	100%	
Katanga	Kanzenze	15	3	1	11	0	1	0	460	22	24	16	2,000	40	125	44	900	20	1	1	1	
Katanga	Burkoya	7	3	1	8	0	1	0	460	22	15	7	2,000	40	125	44	900	20	1	1	1	
Katanga	Mutshatsha	13	3	1	11	0	1	0	460	22	15	15	2,000	40	125	44	700	20	1	1	1	
Katanga	Lualaba	14	3	1	19	0	1	0	460	22	12	16	2,000	40	125	44	500	20	2	1	1	
Katanga	Labudi	16	3	1	8	0	1	0	460	22	33	14	2,500	50	125	44	300	20	1	1	1	
Katanga	Fungurume	11	3	1	20	0	1	0	460	22	24	13	2,500	50	125	44	900	15	1	2	1	
Katanga	Dilala	10	3	0	16	0	1	0	460	22	24	13	2,500	50	125	44	1,400	25	1	2	1	
Katanga	Mamika	13	3	0	15	0	1	0	460	22	24	18	2,500	50	125	44	1,000	25	3	2	1	
S. Kivu	Kalonge	15	3	1	16	0	1	0	553	13	13	17	2,500	21	342	112	500	10	2	2	0	
S. Kivu	Kalche	10	2	0	12	0	0	0	534	13	5	11	2,833	21	306	102	500	10	1	1	2	
S. Kivu	Minova	10	2	1	8	0	1	0	549	13	5	17	2,833	21	330	109	500	10	2	1	1	
S. Kivu	Bunyakiri	23	3	1	12	0	1	0	572	13	5	25	2,833	21	414	140	500	10	4	1	2	
S. Kivu	Katana	16	2	0	8	0	0	0	554	13	5	18	2,833	21	354	117	1,000	10	17	1	1	
S. Kivu	Miti	17	2	1	12	0	0	0	553	13	5	18	2,500	21	354	117	1,000	10	11	1	1	
S. Kivu	Idjwi	21	2	1	16	0	1	0	3,064	13	5	22	2,833	30	402	138	1,000	10	3	2	1	
Distributed to HZs			40	11	216	0	12	0	10,059	267	214	240	37,865	516	3,592	1,187	11,600	235	51	20	2	
Quantity Received by WVI			40	11	216	0	12	0	10,059	267	221	300	38,665	548	3,586	1,197	15,900	235	56	20	21	
Balance			0	0	24	0	0	0	0	0	7	60	1,500	32	84	10	4,300	0	5	0	19	
% Distributed			100%	100%	89%	N.A.	100%	N.A.	100%	100%	97%	80%	96%	94%	98%	99%	73%	100%	91%	100%	10%	
K. Oc.	Tshikaji	12	3	0	0	0	1	0	346	18	16	12	2,000	20	290	95	1,300	31	1	1	2	
K. Oc.	Bulape	15	3	1	0	0	1	0	432	18	16	15	2,000	20	190	57	800	41	1	1	2	
K. Oc.	Mutoto	13	2	1	0	0	0	0	374	18	16	13	2,000	20	190	57	400	36	1	1	2	
K. Oc.	Lubondai	19	3	0	8	0	1	0	547	17	16	19	3,000	30	190	57	1,000	52	1	1	2	
K. Or.	Bibanga	14	3	1	14	0	0	0	126	10	10	14	2,000	21	315	97	1,300	39	2	1	2	
K. Or.	Mpokoto	15	3	1	16	0	1	0	432	18	16	15	4,599	23	365	107	1,200	41	2	1	2	
K. Or.	Dibindi	13	2	0	11	0	0	0	40	7	14	13	3,000	45	190	57	400	50	1	1	0	
K. Or.	Lodja	22	3	1	22	0	1	0	2	7	13	22	2,500	2	190	57	0	48	0	1	0	
K. Or.	Lusambo	13	3	1	13	0	1	0	250	4	16	13	2,500	5	190	57	5,000	50	1	1	0	
K. Or.	Omerdjadi	18	3	1	18	0	1	0	3	8	16	18	2,500	5	190	57	0	50	0	2	0	
K. Or.	Pania Mutombo	10	2	1	10	0	1	0	100	4	16	10	2,500	5	190	57	5,000	50	1	1	0	
K. Or.	Vanga Kete Oto	17	3	1	17	0	0	0	1	8	13	17	2,500	5	190	57	0	60	0	2	0	
Katanga	Mulongo	25	2	1	0	1	1	0	461	16	15	25	1,094	24	125	50	300	41	1	1	2	
Katanga	Kayamba	20	3	1	0	0	1	0	374	16	15	20	1,861	20	125	40	500	30	1	1	2	
Katanga	Lwamba	23	2	1	0	0	1	0	230	16	15	23	1,880	12	125	30	500	30	1	1	2	
Katanga	Songa	15	2	1	0	0	1	0	835	16	15	15	2,701	44	250	90	1,100	72	1	2	2	
Katanga	Malamba Nkulu	7	3	1	0	1	1	0	461	16	15	7	3,637	24	125	50	1,000	41	1	2	2	
Katanga	Mukanga	13	2	1	15	1	1	0	461	16	15	13	4,485	24	125	50	1,300	41	1	2	2	
Katanga	Kabongo	14	1	0	0	0	0	0	720	16	15	14	4,672	36	250	80	1,300	63	1	1	2	
Katanga	Kitenge	16	1	1	0	0	1	0	576	16	15	16	4,733	30	250	60	1,300	45	1	2	2	
Katanga	Kinkondja	18	2	1	1	0	1	0	662	16	15	18	5,065	35	250	70	1,600	60	1	1	1	
Distributed to HZs			51	17	145	3	16	0	7,433	281	313	332	61,227	450	4,805	1,332	25,300	971	20	25	29	
Quantity Received by ECC			52	17	145	3	16	0	7,433	317	365	332	61,227	493	4,825	1,332	25,300	971	25	25	29	
Balance			1	0	0	0	0	0	0	36	52	0	0	43	520	0	0	0	5	0	0	
% Distributed			98%	100%	100%	100%	100%	N.A.	100%	89%	86%		100%	91%	89%	100%	100%	100%	80%	100%	100%	
Distributed to HZs			148	50	563	3	45	0	31,257	1,256	1,229	911	159,045	1,724	13,453	4,435	56,700	2,082	98	70	91	
Quantity Received			151	50	601	3	45	30	31,257	1,292</												

		OUTILS GESTION FINANCIERE ET DES MEDICAMENTS																	
Region	Health Zone	CS	RUMER	Registre Cons. Med/ HGR	Fiches tech Gestion Med CS	Fiches tech Gestion Med HGR	Fiches tech Gestion Med BCZS	Fiches de stock	Quintanctier	Journal recettes CS	Journal dépenses CS	Journal recettes BCZS	Journal dépenses BCZS	Journal Ventilation HGR	Journal recettes HGR	Journal dépenses HGR	Bons Sortie caisse	Bons entrée caisse	Livre de caisse
S. Kivu	Kadutu	11	18	3	28	2	2	2,637	32	5	5	3	3	9	7	3	12	12	12
S. Kivu	Mwana	19	11	2	0	2	1	212	37	5	6	4	2	10	7	3	7	7	7
S. Kivu	Nyangezi	10	15	1	0	0	0	163	29	4	4	3	3	9	7	4	11	11	11
S. Kivu	Kaziba	15	31	2	0	0	0	195	34	5	5	3	5	12	9	6	21	21	21
S. Kivu	Walungu	11	33	3	56	4	4	5,275	63	9	10	6	6	18	14	7	23	23	23
S. Kivu	Kaniola	7	18	1	0	0	0	179	32	5	5	3	3	9	7	3	13	13	13
S. Kivu	Mubumbano	10	20	2	0	0	0	244	43	6	7	4	3	12	9	4	14	14	14
S. Kivu	Kamituga	20	22	2	0	4	0	177	49	8	8	6	4	15	11	5	16	16	16
S. Kivu	Mwenga	22	25	2	0	0	0	260	46	7	7	5	4	13	10	5	17	17	17
S. Kivu	Uvira	25	23	2	38	3	3	3,629	49	8	9	6	4	16	11	5	16	16	16
S. Kivu	Bijombo	10	42	2	56	4	4	5,275	63	8	9	6	6	18	13	6	23	23	23
S. Kivu	Nundu	15	32	2	54	4	4	5,035	60	10	9	6	5	17	20	6	22	22	22
S. Kivu	Lemera	20	28	2	46	4	4	4,349	58	9	9	6	5	17	13	6	19	19	19
S. Kivu	Ruzizi	15	18	1	31	2	2	2,877	43	7	7	5	3	12	9	4	13	13	13
S. Kivu	Ibanda	8	22	2	38	3	3	3,547	34	5	5	4	4	7	8	4	16	16	16
S. Kivu	Bagira	22	12	1	20	2	2	1,918	23	3	4	2	2	7	5	2	8	8	8
S. Kivu	Kitutu	26	22	2	0	0	0	358	63	9	10	6	6	19	14	7	24	24	24
S. Kivu	Lulingu	15	24	2	0	0	0	326	78	8	9	6	0	17	12	5	21	21	21
S. Kivu	Kalole	15	22	2	0	0	0	491	78	11	11	7	0	21	18	9	32	32	32
S. Kivu	Shubunda	21	22	2	0	0	0	293	52	8	8	6	50	16	5	5	19	19	19
S. Kivu	Mulungu	22	22	2	3	0	1	1,142	58	8	9	6	5	17	19	6	19	20	22
Distributed to HZs			482	40	370	34	30	38,582	1,024	148	156	103	123	291	228	105	366	367	369
Quantity Received by CRS			482	40	370	34	30	38,582	1,024	150	158	105	123	293	228	106	366	367	369
Balance			0	0	0	0	0	0	0	2	2	0	2	0	2	0	1	0	0
% Distributed			100%	100%	100%	100%	100%	100%	100%	99%	99%	98%	100%	99%	100%	99%	100%	100%	100%
Katanga	Kanzenze	15	20	2	19	2	1	2,250	60	9	18	4	2	4	4	4	32	9	18
Katanga	Bunkeya	7	20	2	19	2	1	2,250	60	5	5	4	1	1	1	1	14	5	7
Katanga	Mutshatsha	13	22	1	19	1	1	2,250	60	9	13	4	2	4	4	4	26	13	14
Katanga	Lualaba	14	20	1	19	1	1	2,250	60	9	15	4	2	0	0	0	33	20	21
Katanga	Lubudi	16	25	2	18	2	1	2,250	60	10	10	4	2	3	3	3	31	20	17
Katanga	Fungurume	11	28	2	19	2	1	2,250	60	10	10	4	1	3	3	3	28	10	13
Katanga	Dihala	10	25	1	19	1	1	2,250	60	8	19	4	2	6	6	6	30	10	18
Katanga	Mamika	13	28	2	19	2	1	2,250	60	9	15	4	2	6	6	6	35	25	20
S. Kivu	Kalonge	15	25	2	20	1	1	3,000	65	33	47	10	0	19	8	0	18	0	18
S. Kivu	Kalehe	10	25	2	15	1	1	1,500	50	21	30	10	0	28	8	0	12	0	12
S. Kivu	Minova	10	25	2	15	1	1	3,000	60	26	40	10	0	18	6	0	13	0	13
S. Kivu	Bunyakiri	23	25	2	28	1	1	2,000	95	47	65	10	0	24	8	0	16	0	14
S. Kivu	Kitana	16	25	2	20	1	1	2,000	70	33	47	10	0	19	8	0	18	0	18
S. Kivu	Miti	17	25	2	20	1	1	1,500	70	34	48	10	0	19	8	0	19	0	19
S. Kivu	Ijwi	21	30	2	28	1	1	2,000	90	42	58	11	0	22	9	0	23	0	23
Distributed to HZs			368	27	297	20	15	33,000	980	305	440	103	14	176	82	27	348	112	245
Quantity Received by WVI			563	41	351	27	29	33,000	980	381	651	104	65	376	104	31	350	114	247
Balance			195	14	54	7	14	0	0	76	211	1	51	200	22	4	2	2	2
% Distributed			65%	66%	85%	74%	52%	100%	100%	80%	68%	99%	22%	47%	79%	87%	99%	98%	99%
K. Oc.	Tshikaji	12	20	1	18	2	2	2,000	64	15	15	4	5	5	5	5	12	1	21
K. Oc.	Bulape	15	20	2	23	2	2	2,000	75	11	9	5	5	6	5	5	17	1	15
K. Oc.	Mutoto	13	20	1	20	2	2	2,000	64	13	9	4	5	3	5	5	15	1	12
K. Oc.	Lubondai	19	30	2	29	2	2	2,000	64	39	38	8	5	10	5	5	31	1	21
K. Or.	Bibanga	14	21	2	20	2	2	2,000	64	14	12	5	1	5	9	9	2	1	18
K. Or.	Mpokofo	15	23	2	23	2	2	2,000	64	14	14	5	5	5	5	5	2	1	18
K. Or.	Dibindi	13	9	0	42	5	1	6,000	70	36	36	6	0	6	0	0	2	1	18
K. Or.	Lodja	7	2	32	5	0	0	6,000	59	28	31	5	0	3	0	0	15	16	17
K. Or.	Lusambo	13	6	0	40	4	2	6,000	70	32	32	4	0	4	0	0	2	1	16
K. Or.	Omcendjani	18	7	5	71	4	2	8,000	70	4	22	4	0	4	0	0	30	1	18
K. Or.	Pania Mutombo	10	7	0	40	4	4	6,000	70	32	32	4	0	4	0	0	2	1	16
K. Or.	Vanga Kete Oto	17	6	5	31	4	1	6,500	30	5	30	5	0	7	0	0	20	12	15
Katanga	Mulongo	25	24	2	24	2	2	2,000	70	25	16	3	5	5	5	5	3	1	16
Katanga	Kvumba	20	20	2	20	2	2	2,000	70	20	13	3	5	5	5	5	3	1	18
Katanga	Lwamba	23	12	2	12	2	2	2,000	70	23	13	4	5	5	5	5	3	1	18
Katanga	Songa	15	43	2	43	2	2	2,000	70	15	19	4	5	5	5	5	3	1	18
Katanga	Malemba Nkulu	7	24	2	24	2	2	2,000	70	7	16	3	5	5	5	5	3	1	18
Katanga	Mukanga	13	24	2	24	2	2	2,000	70	13	16	3	5	5	5	5	3	1	18
Katanga	Kabongo	14	38	2	38	2	2	2,000	70	14	19	3	5	5	5	5	3	1	18
Katanga	Kitenge	16	30	2	30	2	2	2,000	70	16	19	3	5	5	5	5	3	1	18
Katanga	Kirkondja	18	35	2	35	2	2	2,000	70	18	19	4	5	5	5	5	3	1	18
Distributed to HZs			426	40	639	56	40	68,500	1,434	394	430	438	71	107	75	75	177	47	365
Quantity Received by ECC			426	40	639	56	40	78,000	1,434	438	438	438	75	164	75	75	177	47	365
Balance			0	0	0	0	0	9500	0	44	8	0	4	57	0	0	0	0	0
% Distributed			100%	100%	100%	100%	100%	88%	100%	90%	98%	100%	95%	65%	100%	100%	100%	100%	100%
Distributed to HZs			1276	107	1306	110	85	140082	3438	847	1026	644	208	574	385	207	891	526	979
Quantity Received			1471	121	1360	117	99	149582	3438	969	1247	647	263	833	407	212	893	528	981
Balance			195	14	54	7	14	9500	0	122	221	3	55	259	22	5	2	2	2
% Distributed			87%	88%	96%	94%	86%	94%	100%	87%	82%	100%	79%	69%	95%	98%	100%	100%	100%
Average/HZ			22.39	1.88	22.91	1.93	1.49	2457.58	60.32	14.86	18.00	11.30	3.65	10.07	6.75	3.63	15.63	9.23	17.18

		Santé de Reproduction et PF																	
Region	Health Zone	CS	Fiche CPN (x1000)	Fiche CPON (x1000)	Programme (x500)	Fiche Con P.F (1000)	Registre Con P.F (et x... (Bis)	Carte RDV ND	Regis. CPN	Registre CPON	Registre Accouchements	Depo Provera	Lo-femeral	Orrette	DIU	Condoms	Condoms Féminin	Tests RPR/cpn	
S. Kivu	Kadutu	11	3301	2500	2882	500	0	1336	21	19	26	1,618	2,446	1,490	20	19,799	1,002	36	
S. Kivu	Mwana	19	3356	2500	3543	500	0	1637	18	18	24	921	1,096	868	12	11,311	449	12	
S. Kivu	Nyangezi	10	1274	500	2,303	500	0	1,124	9	7	14	1,143	798	1,111	16	14,064	327	12	
S. Kivu	Kaziba	15	1329	500	3,963	750	0	649	19	14	20	1,406	828	1,377	20	17,319	339	3	
S. Kivu	Walungu	11	1602	2500	6,266	750	0	2,424	24	38	45	2,721	1,038	2,712	40	33,692	425	12	
S. Kivu	Kaniola	7	3301	2500	2382	500	0	1211	26	25	28	1,513	1,038	1,392	20	17,642	425	3	
S. Kivu	Mubumbano	10	3410	2500	3203	500	0	1561	29	29	37	1,722	1,255	1,164	24	21,184	514	3	
S. Kivu	Kamitaga	20	3466	2500	4364	750	0	1861	43	34	42	2,265	1,436	2,212	32	27,881	588	15	
S. Kivu	Mwenga	22	1438	500	4784	750	0	1899	12	19	26	1,876	1,476	1,359	28	24,732	604	6	
S. Kivu	Uvira	25	3466	2500	3,364	750	0	1,861	31	33	39	1,926	837	1,906	28	23,753	343	129	
S. Kivu	Bijombo	10	3602	2500	4,766	750	0	2424	37	41	53	2,457	932	2,441	36	30,318	381	0	
S. Kivu	Nundo	15	3575	2500	4685	750	0	2336	39	41	53	2,483	1,119	2,454	36	30,605	458	63	
S. Kivu	Lemera	20	3548	2500	4105	750	0	2249	35	36	44	2,243	1,273	2,200	32	27,631	512	12	
S. Kivu	Ruzizi	15	3328	2500	2,463	500	0	1549	23	26	34	1,559	1,972	1,456	20	19,073	808	27	
S. Kivu	Ibanda	8	3328	2500	1963	500	0	1299	26	16	36	1,543	1,869	1,450	20	18,915	765	28	
S. Kivu	Bagira	22	3219	2500	1642	500	0	949	15	14	18	1,207	1,283	1,145	16	14,807	525	9	
S. Kivu	Kitutu	26	1602	0	2766	950	27	1,924	23	23	47	1877	968	2227	40	17684	396	0	
S. Kivu	Lulingu	15	2348	2000	3805	500	27	2,361	27	23	44	1916	1,262	2248	40	3554	519	0	
S. Kivu	Kalole	15	1739	0	3167	950	27	2,361	23	23	52	1938	1,430	2259	40	18391	585	0	
S. Kivu	Shabunda	21	1493	0	2445	950	27	1,574	23	23	42	1938	1,430	2259	40	18391	585	0	
S. Kivu	Mulungu	22	1575	0	2685	950	27	1,836	23	23	46	1962	1,614	2272	40	18674	661	0	
Distributed to HZs			55,300	36,000	71,546	14,300	135	36,425	526	525	770	38,234	27,400	38,002	600	429,420	11,211	370	
Quantity Received by CRS			55,300	36,000	71,546	14,300	135	36,425	526	525	770	38,234	27,400	38,002	600	429,420	11,220	370	
Balance			0	0	0	0	0	0	0	0	0	0	0	0	0	0	0	9	0
% Distributed			100%	100%	100%	100%	100%	100%	100%	100%	100%	100%	100%	100%	100%	100%	100%	100%	100%
Katanga	Kanzenze	15	2,810	2,310	2,310	1,310	4	0	30	10	30	0	1600	1300	25	27000	400	873	
Katanga	Bunkeya	7	2,790	2,290	2,290	1,290	4	0	15	10	20	100	1600	1300	25	24000	500	933	
Katanga	Mutsatshtu	13	2,290	2,240	2,290	1,290	4	0	15	10	30	0	1600	1300	25	24000	400	1240	
Katanga	Lualaba	14	2,790	2,140	2,540	1,140	4	0	15	10	30	50	1600	1300	25	30000	500	1376	
Katanga	Lubudi	16	2,800	2,650	2,550	1,050	4	0	20	13	40	150	1600	1300	25	27000	600	1418	
Katanga	Fungurume	11	3,300	3,650	2,550	1,050	4	0	30	13	40	100	1800	2100	25	33000	500	1697	
Katanga	Dilala	10	3,330	2,580	2,580	1,080	4	0	30	13	40	875	3300	3300	25	33000	900	1786	
Katanga	Mamika	13	3,390	2,640	2,640	1,140	4	0	30	13	40	875	3300	3300	25	33000	1,100	3114	
S. Kivu	Kalonge	15	3,500	2,500	4,250	517	0	1000	18	35	23	0	2242	2,242	25	12550	754	1700	
S. Kivu	Kalehe	10	3,500	2,500	3,250	517	0	1000	18	35	23	0	1972	2,434	25	28730	814	1700	
S. Kivu	Minova	10	3,500	2,583	3,500	517	0	1000	18	35	23	0	2000	2,600	50	31710	873	1700	
S. Kivu	Bumyakiri	23	3,500	2,500	3,250	517	0	1000	18	35	23	0	1912	3,540	50	28740	784	1900	
S. Kivu	Katana	16	3,000	2,583	3,250	517	0	1500	18	35	14	0	3292	2,600	50	31710	874	2500	
S. Kivu	Miti	17	3,500	2,583	5,000	517	0	1000	18	35	20	0	2150	3,900	25	33700	904	2200	
S. Kivu	Idjwi	21	2,500	2,500	5,000	517	3	1500	16	36	21	0	3530	4,210	25	35660	993	1900	
Distributed to HZs			46,500	38,249	47,250	12,969	35	8,500	309	338	417	2,150	33,498	36,726	450	433,800	10,896	26,036	
Quantity Received by WVI			47,000	40,334	47,750	16,350	83	8,500	309	372	445	23,800	34,400	37,110	450	459,000	13,000	26,036	
Balance			500	2088	500	3381	48	0	0	34	28	21650	902	384	0	25200	2104	0	
% Distributed			99%	95%	99%	79%	42%	100%	100%	91%	94%	9%	97%	99%	100%	95%	84%	100%	
K. Oc.	Tshikaji	12	1,5	3	3	0,5	15	700	20	20	20	3,600	5,100	5,100	50	42000	250	300	
K. Oc.	Bulape	15	2	3	3	1	20	700	20	20	20	2,800	2,700	2,700	50	9000	300	300	
K. Oc.	Mutoto	13	1,5	3	3	0,5	20	600	20	20	20	1,400	1,500	1,500	25	21000	250	300	
K. Oc.	Lubondai	19	2,5	4	4	1	30	1000	30	30	30	3,570	2,700	2,700	50	45000	300	300	
K. Or.	Bibanga	14	1,5	1,5	3	1	21	800	21	20	21	1,600	1,700	1,500	75	9000	500	400	
K. Or.	Mpokolo	15	5	4	8	3	23	1700	23	20	33	3,200	4,500	1,400	25	24000	500	400	
K. Or.	Dibindi	13	0,5	0	0	0	9	2000	0	8	5	400	600	400	25	0	0	0	
K. Or.	Lodja	22	400	0	0	1,5	10	1500	0	8	4	400	200	500	25	3000	0	0	
K. Or.	Lusambo	13	7	7	0	7	9	2000	0	7	4	200	500	200	25	0	0	0	
K. Or.	Omendjadi	18	500	0	0	3	9	2000	0	7	4	400	0	350	25	3000	0	0	
K. Or.	Pania Mutombo	10	0,5	0	0	7	9	2000	0	7	4	185	300	100	25	0	0	0	
K. Or.	Vanga Kete Oto	17	300	0	0	1,5	9	1500	0	7	3	200	200	350	25	3000	0	0	
Katanga	Mulongo	25	1	1	1	0,5	24	500	24	24	28	1,400	2,600	2,555	50	27000	555	1,300	
Katanga	Kavamba	20	2	1	3	1	20	1000	20	20	22	1,400	1,400	1,355	50	18000	555	1,700	
Katanga	Lwamba	23	2	1,5	3	1	12	1000	12	12	14	1,600	2,600	2,555	50	18000	555	1,800	
Katanga	Songa	15	2,5	2	4	2	44	1400	44	44	46	3,600	2,600	2,560	50	36000	555	2,200	
Katanga	Malembu Nkulu	7	3,5	3	6	1	24	1500	24	24	26	2,800	2,600	2,555	50	30000	555	2,600	
Katanga	Mukanga	13	4,5	4	8	1	24	2000	24	24	26	3,200	2,600	2,555	50	39000	555	3,000	
Katanga	Kabongo	14	4,5	4	8	1	38	2000	38	38	40	9,150	3,800	3,755	75	51000	560	2,900	
Katanga	Kitenge	16	4,5	4	8	1	30	1200	30	30	32	3,200	3,800	3,755	50	45000	555	3,000	
Katanga	Kinkondja	18	5	4,5	9	1	35	1400	34	34	37	6,800	6,200	6,155	75	51000	555	3,200	
Distributed to HZs			49500	44000	74000	30000	435	28500	384	424	437	51105	48200	44600	925	474000	7100	23700	
Quantity Received by ECC			49500	44000	74,000	30,000	435	28,500	384	425	437	51,105	48,200	44,600	925	7,500	23,700	0	
Balance			0	0	0	0	0	0	0	1	0	0	0	0	0	0	0	400	0
% Distributed			100%	100%	100%	100%	100%	100%	100%	100%	100%	100%	100%	100%	100%	100%	95%	100%	100%
Distributed to HZs			151300	118249	192796	57269	605	73425	1219	1287	1624	91489	109098	119328	1975	1337220	29207	50106	
Quantity Received			151800	120334	193296	60650	653	73425	1219	1322	1652	113139	110000	119712	1975	888420	31720	50106	
Balance			500	2085	500	3381	<												

Region	Health Zone	CS	Santé de Reproduction et PF (con't)										PALUDISME							
			Coiller du Cycle	CCV Kit	Diu Kit	SPTPH	Mebendazole	Ferr-Acide folique	Boites à images (or)	Boite images PCIME	Boite images Violences sexuelles	Moustiquaires LL	Registre L.T.N -sans	Registre L.T.N femmes enceintes	Registre Rapport Mensuel ITN	Boite image paludisme	Registre Rapport Annuel L.T.N	Fiches Techniques P.N.L.P.		
S. Kivu	Kadutu	11	299			7000	2000	183000	11	11	11	3,400	16	16	17	27	1	28		
S. Kivu	Mwana	19	120	1	1	5000	1000	82000	13	13	13	1,450	19	19	14	32	1	31		
S. Kivu	Nyangezi	10	172	1		2000	1000	60000	10	10	10	1,700	15	15	15	0	1	0		
S. Kivu	Kaziba	15	344	1		3000	1000	62000	12	12	12	1,750	18	18	30	0	1	0		
S. Kivu	Walungu	11	599	1		3000	2000	78000	22	22	22	2,050	33	33	30	54	1	57		
S. Kivu	Kaniola	7	206	1	1	3000	1000	78000	11	11	11	1,650	16	16	18	0	1	0		
S. Kivu	Mubumbano	10	223	1	1	4000	1000	94000	15	15	15	1,750	22	22	20	0	1	0		
S. Kivu	Kamitaga	20	258	1	1	4000	1000	107000	19	19	19	1,600	25	25	23	37	1	0		
S. Kivu	Mwenga	22	275	1	1	4000	1000	110000	16	16	16	1,950	23	23	24	0	1	0		
S. Kivu	Uvira	25	408	1	1	3000	2000	63000	20	20	20	2,700	25	25	23	37	1	57		
S. Kivu	Bijombo	10	599	1	1	3000	1000	70000	20	20	20	1,150	33	33	33	54	1	40		
S. Kivu	Nundu	15	572	1	1	3000	2000	84000	21	21	21	1,800	31	31	32	52	1	0		
S. Kivu	Lemem	20	490	1	1	4000	1000	95000	21	21	21	1,650	30	30	27	45	1	39		
S. Kivu	Ruzizi	15	326	1	1	6000	1000	148000	16	16	16	2,750	17	17	18	30	1	47		
S. Kivu	Ibanda	8	408			6000	2000	139000	12	12	12	3,050	18	17	23	37	1	39		
S. Kivu	Bagira	22	218	1	1	4000	1000	96000	8	8	8	1,700	12	12	12	20	1	21		
S. Kivu	Kitutu	26	395	1	1	3000	1000	72000	22	22	22	4,650	33	33	35	0	1	0		
S. Kivu	Lulingu	15	545	1	1	4000	1000	94000	20	20	20	6,800	30	30	30	0	1	0		
S. Kivu	Kalole	15	817	1	1	3000	1000	107000	27	27	27	2,500	40	40	45	0	1	0		
S. Kivu	Shubunda	21	490			4000	1000	121000	19	19	19	2,150	27	27	27	0	1	0		
S. Kivu	Mulungu	22	260	1	1	5000	1000	107000	20	20	20	2,650	31	31	32	0	1	3		
Distributed to HZs			8,024	18	16	83,000	26000	2080000	355	355	355	50,850	514	513	528	425	21	362		
Quantity Received by CRS			8024	18	16	83,000	26,000	2,080,000	357	360	360	108500	514	513	528	425	21	362		
Balance			0	0	0	0	0	0	2	5	5	57650	0	0	0	0	0	0		
% Distributed			100%	100%	100%	100%	100%	100%	99%	99%	99%	47%	100%	100%	100%	100%	100%	100%		
Katanga	Kanzenze	15	345	1	1	1000	25	0	15	16	16	5600	25	0	20	20	0	19		
Katanga	Bunkeya	7	345	1	1	1000	25	0	12	7	7	4100	7	0	7	20	0	20		
Katanga	Mutshatsha	13	343	1	1	1500	25	0	15	15	15	5400	25	0	20	10	0	20		
Katanga	Luanaba	14	395	1	1	0	25	0	15	16	16	4600	25	0	20	20	0	19		
Katanga	Lubudi	16	400	1	1	1500	25	0	15	14	14	5900	25	0	20	20	0	23		
Katanga	Fungurume	11	398	1	1	2000	25	0	15	13	13	5500	10	0	10	20	0	19		
Katanga	Dilala	10	432	1	1	2000	25	0	20	13	13	7000	25	0	20	28	0	20		
Katanga	Manika	13	422	1	1	0	0	0	20	15	15	9000	25	0	20	28	0	22		
S. Kivu	Kalonge	15	457	1	1	3000	49	0	15	15	15	2600	22	22	17	17	0	20		
S. Kivu	Kalehe	10	457	1	1	4000	31	0	10	10	10	1000	17	17	11	12	0	15		
S. Kivu	Minova	10	457	1	1	4000	45	0	10	10	10	1000	20	20	12	12	0	15		
S. Kivu	Bunyakiri	23	518	1	1	3000	66	0	23	23	23	2800	32	32	24	25	0	28		
S. Kivu	Katana	16	457	1	1	4000	50	0	16	16	16	3200	23	23	17	20	0	20		
S. Kivu	Miti	17	457	1	1	5000	49	0	17	17	17	3300	23	23	17	17	0	20		
S. Kivu	Ijwi	21	517	1	1	5000	59	0	21	21	21	3600	30	30	24	25	0	28		
Distributed to HZs			6,400	15	15	37,000	524	0	239	221	221	64,600	334	167	259	294	0	308		
Quantity Received by WV1			6,603	15	15	37000	525	0	280	280	280	75500	353	167	304	348	0	330		
Balance			203	0	0	0	1	0	41	59	59	10900	19	0	45	54	0	22		
% Distributed			97%	100%	100%	100%	100%	#DIV/0!	85%	79%	79%	80%	95%	100%	85%	84%	#DIV/0!	93%		
K. Oc.	Tshikaji	12	400	2	1	5000	2000	118000	12	12	12	5000	20	25	18	18	1	18		
K. Oc.	Bulape	15	348	2	1	5000	2000	123000	15	15	15	5600	22	25	23	23	1	23		
K. Oc.	Mutoto	13	398	2	1	4000	2000	102000	13	13	13	1600	21	25	10	20	1	20		
K. Oc.	Lubondou	19	398	2	1	7000	2000	168000	19	19	19	5500	22	25	29	28	1	28		
K. Or.	Bibanga	14	100	2	2	5000	1000	126000	14	14	14	6300	22	22	22	21	1	21		
K. Or.	Mpokozi	15	100	2	2	13000	3000	325000	15	15	15	3000	27	27	27	23	1	36		
K. Or.	Dibindi	13	0	2	1	0	0	0	13	13	13	1850	60	60	47	45	1	0		
K. Or.	Lodja	22	0	1	0	0	0	0	22	22	22	2050	56	50	32	44	0	0		
K. Or.	Lusambo	13	0	1	1	0	0	0	13	13	13	1650	60	58	47	40	1	36		
K. Or.	Omcendjati	18	0	2	0	0	0	0	18	18	18	1600	51	58	42	38	0	0		
K. Or.	Pania Mutombo	10	0	1	1	0	0	0	10	10	10	1650	58	58	47	40	1	36		
K. Or.	Vanga Kete Oto	17	0	0	0	0	0	0	17	17	17	1600	65	66	37	41	0	0		
Katanga	Mulongo	25	95	2	1	4000	2000	79000	25	25	25	2950	36	36	36	24	1	24		
Katanga	Kayamba	20	95	1	1	3000	1000	100000	20	20	20	2800	30	30	30	20	1	20		
Katanga	Lwamba	23	96	1	1	3000	1000	136000	23	23	23	1500	33	33	33	12	1	12		
Katanga	Songa	15	100	2	2	8000	3000	195000	15	15	15	6400	23	23	23	44	1	43		
Katanga	Malamba Nkulu	7	95	2	2	4000	1000	100000	7	7	7	2950	11	11	11	24	1	24		
Katanga	Mukanga	13	95	2	2	4000	1000	180000	13	13	13	2400	20	20	20	24	1	24		
Katanga	Kabongo	14	97	2	2	6000	2000	98000	14	14	14	6200	21	21	21	38	1	38		
Katanga	Kitenge	16	100	1	1	6000	1000	98000	16	16	16	3300	24	24	24	30	1	30		
Katanga	Kirkondja	18	100	2	2	6000	2000	99000	18	18	18	6000	27	27	27	33	1	34		
Distributed to HZs			2617	34	25	83000	26000	2047000	332	332	332	71900	709	724	606	630	18	467		
Quantity Received by ECC			2,617	35	25	83000	26000	2,047,000	360	360	360	107900	709	799	606	632	18	467		
Balance			0	1	0	0	0	0	28	28	28	36000	0	75	0	2	0	0		
% Distributed			100%	97%	100%	100%	100%	100%	92%	92%	92%	67%	100%	91%	100%	100%	100%	100%		
Distributed to HZs			17041	67	56	203000	52524	4097000	926	908	908	187350	1557	1404	1393	1349	39	1137		
Quantity Received			17244	68	56	203000	52525	4,097,000	997	1000	1000	291900	1576	1479	1438	1405	39	1159		
Balance			203	1	0	0	1	0	71	92	92	104550	19	75	45	56	0	22		
% Distributed			99%	99%	100%	100%	100%	100%	93%	91%	91%	64%	99%	95%	97%	96%	100%	98%		
Average/HZ			299	1	1	3561	921	71877	16	16	16	3287	27	25	24	24	1	20		

Region	Health Zone	CS	PEV/CPS													
			Registre Form. PEV.1	Registre Form. PEV.2	Registre Form. PEV.3	Registre Form. PEV.4	Carnet Fiches pointage PEV.	Registre vacce PEV.	Fiches de CPS	Registre CPS	Solar Refrigerator Standalone	Vaccine Carrier	Icepacks/Accumulateur	Kerosene(litre)	Refrigerator SIBIR	
S. Kivu	Kadutu	11	79	3	21	21	64	27	5160	28	1	8	33	540	3	
S. Kivu	Mwana	19	0	0	0	0	41	17	2400	29	1	5	19	1460	2	
S. Kivu	Nyangezi	10	0	0	0	0	58	0	3400	15	1	6	23	640	3	
S. Kivu	Kaziba	15	0	0	0	0	117	0	5300	23			7	27	2000	3
S. Kivu	Walunga	11	159	7	41	41	128	54	8720	55	1	12	49	2540	3	
S. Kivu	Kaniola	7	0	0	0	0	70	0	2900	31	1	6	25	1170	2	
S. Kivu	Mubumbano	10	0	0	0	0	0	0	2850	43	1	8	31	1550	2	
S. Kivu	Kamituga	20	0	6	0	0	87	0	4750	45	1	10	41	1710	3	
S. Kivu	Mwenga	22	0	0	0	0	93	0	3400	31			5	19	2360	2
S. Kivu	Uvira	25	108	5	28	28	87	37	6000	43	1	9	35		3	
S. Kivu	Bijombo	10	159	5	41	41	128	54	4200	59			10	41	1550	2
S. Kivu	Nundu	15	152	7	39	39	122	52	5370	57			9	35	2180	2
S. Kivu	Lemera	20	130	4	34	34	105	45	4700	48			11	43	3510	1
S. Kivu	Ruzizi	15	87	2	23	23	70	30	4800	35	1	7	29		2	
S. Kivu	Ibanda	8	108	5	28	28	87	37	6430	32	1	7	29	820	2	
S. Kivu	Bagira	22	58	2	15	15	47	20	4060	20	1	5	19	540	2	
S. Kivu	Kitutu	26	0	0	0	0	134	0	3430	44			8	31	1280	3
S. Kivu	Lulingu	15	0	0	0	0	117	0	4130	42			8	31	720	1
S. Kivu	Kalole	15	0	0	0	0	175	0	3180	49			14	56	1640	2
S. Kivu	Shubunda	21	0	0	0	0	105	0	3580	40			8	32	820	2
S. Kivu	Mulungu	22	27	0	15	11	2	10	3620	43			8	31	1440	2
Distributed to HZs			1,067	46	285	281	1,837	383	92,380	812	11	171	679	28,470	47	
Quantity Received by CRS			1067	46	285	281	1837	383	92400	812	12	176	704	28470	47	
Balance			0	0	0	0	0	0	20	0	1	5	25	0	0	
% Distributed			100%	100%	100%	100%	100%	100%	100%	100%	92%	97%	96%	100%	100%	
Katanga	Kanzenze	15	70	3	15	8	20	19	1,000	20	1	0	0	480	0	
Katanga	Bankeva	7	70	3	15	8	5	19	1,000	15	1	0	0	1200	0	
Katanga	Mutshutsha	13	45	1	10	8	70	20	1,000	15	0	0	0	480	0	
Katanga	Lualaba	14	70	3	15	7	70	19	1,000	20	1	0	0	800	0	
Katanga	Lubudi	16	60	3	15	20	70	15	2,000	20	0	0	0	1200	0	
Katanga	Fungurame	11	70	3	15	7	20	18	2,000	20	1	0	0	1400	1	
Katanga	Dilala	10	80	4	20	8	70	20	2,000	20	0	0	0	240	0	
Katanga	Mamika	13	80	0	20	8	70	20	2,000	20	0	0	0	120	1	
S. Kivu	Kalonge	15	40	1	5	5	102	10	2000	30	1	16	64	1455	0	
S. Kivu	Kalehe	10	22	1	5	5	102	8	3000	24	0	11	49	1455	1	
S. Kivu	Minova	10	22	1	5	5	102	8	4000	24	0	15	59	3135	0	
S. Kivu	Bunyakiri	23	50	1	5	5	102	16	2000	30	1	15	93	1455	1	
S. Kivu	Katana	16	40	1	5	5	102	17	3000	24	0	24	69	620	2	
S. Kivu	Miti	17	40	1	5	5	102	10	4000	24	0	18	69	1045	2	
S. Kivu	Ijywi	21	50	1	5	5	102	16	3000	40	1	22	89	1255	1	
Distributed to HZs			809	27	160	109	1,109	215	33,000	346	7	121	492	16,340	9	
Quantity Received by WWI			1,065	41	291	249	1,250	349	33,500	347	7	121	492	16,340	9	
Balance			256	14	131	140	141	114	500	1	0	0	0	0	0	
% Distributed			76%	66%	55%	44%	89%	67%	99%	100%	100%	100%	100%	100%	100%	
K. Oc.	Tshikaji	12	48	3	18	18	18	18	2000	20	0	8	34	1080	2	
K. Oc.	Balape	15	60	3	18	18	23	23	2000	20	0	8	35	2520	2	
K. Oc.	Mutoto	13	52	3	18	18	20	20	1500	20	1	8	34	0	2	
K. Oc.	Lubondai	19	76	3	18	18	28	28	2500	30	1	8	34	1440	2	
K. Or.	Bibanga	14	116	3	20	20	115	18	1935	20	1	5	33	3150	2	
K. Or.	Mpokolo	15	60	3	18	18	120	23	5084	20	1	5	32	3325	2	
K. Or.	Dibindi	13	65	10	45	45	132	46	0	8	0	5	0	2125	0	
K. Or.	Lodja	22	130	50	3	97	108	33	0	8	1	5	28	0	0	
K. Or.	Lusambo	13	130	9	45	45	100	45	0	7	0	5	8	2600	0	
K. Or.	Omenjadi	18	105	9	72	22	42	45	0	7	1	5	31	0	0	
K. Or.	Pania Mutombo	10	65	9	45	45	100	45	0	7	0	5	8	2600	0	
K. Or.	Vanga Kete Otoi	17	100	9	35	30	60	32	5135	7	1	5	22	0	0	
Katanga	Mulongo	25	68	3	16	16	60	24	1175	24	1	8	32	1470	2	
Katanga	Kavamba	20	56	3	13	13	52	20	2022	20	1	8	32	1000	2	
Katanga	Lwamba	23	36	3	11	11	52	12	2044	12	1	8	32	1470	2	
Katanga	Songa	15	120	3	25	25	100	44	2950	44	1	8	32	1500	2	
Katanga	Malemba Nkulu	7	68	3	16	16	65	24	3986	24	1	8	32	1470	2	
Katanga	Mukanga	13	0	3	16	16	60	24	4923	24	1	8	21	1370	2	
Katanga	Kabongo	14	104	3	25	25	100	38	5135	38	1	8	32	1735	2	
Katanga	Kitenge	16	84	3	20	20	110	30	5200	30	1	8	32	1585	2	
Katanga	Kinkondja	18	96	3	23	23	100	33	5565	34	1	8	32	2670	1	
Distributed to HZs			1639	141	520	559	1565	625	53154	424	16	144	576	33110	29	
Quantity Received by ECC			1639	141	520	559	1,565	653	53,154	425	16	144	576	33110	29	
Balance			0	0	0	0	28	0	1	0	0	0	0	0	0	
% Distributed			100%	100%	100%	100%	100%	96%	100%	100%	100%	100%	100%	100%	100%	
Distributed to HZs			3515	214	965	949	4511	1243	178534	1582	34	436	1747	77920	85	
Quantity Received			3771	228	1096	1089	4652	1385	179054	1584	35	441	1772	77920	85	
Balance			256	14	131	140	141	142	520	2	1	5	25	0	0	
% Distributed			93%	94%	88%	87%	97%	90%	100%	100%	97%	99%	99%	100%	100%	
Average/HZ			62	4	17	17	79	22	3132	28	1	8	31	1367	1	

Region	Health Zone	CS	EQUIPEMENTS HGRCS																	
			HGR Casernes Kd	Secteur Egling system Kd	HF Minda	Table d'operation HGR hydraulique	Lamps v3 allique	Table de consultation	Table d'acoustique HGR v3 mtr	Bac d'assainissement HGR	Bac de HGR	Bac HGR	Bac HGR	Bac HGR	Bac HGR	Bac HGR	Bac HGR	Bac HGR		
S. Kivu	Kaditu	11	8		11	1	2	6	6	2										
S. Kivu	Mwana	19	8	2	13		0	4	4	2										
S. Kivu	Nyangezi	10	8	2	10	1	1	4	4	2										
S. Kivu	Kaziba	15	8	2	12	1	0	4	4	2										
S. Kivu	Wahungu	11	8	2	22		2	4	6	2										
S. Kivu	Kaniola	7	8	2	12	1	0	4	4	2										
S. Kivu	Mubumbano	10	8	2	14	1	0	4	4	2										
S. Kivu	Kamituga	20	9	2	18	1	0	4	5	3	1	3	2	2	1	0	0			
S. Kivu	Mwenga	22	9	3	16	1	1	4	5	3	1	2	2	2	1	0	0			
S. Kivu	Uvira	25	8	2	17	1	0	6	6	2										
S. Kivu	Bijombo	10	8	2	20	1	1	5	4	2	1	2	2	2	0	0	0			
S. Kivu	Nandu	15	8	2	21	1	0	4	5	2										
S. Kivu	Lemera	20	8	2	18	1	0	5	5	2										
S. Kivu	Ruzizi	15	8	2	12	1	1	4	5	2										
S. Kivu	Ibanda	8	8		12		0	4	5	2										
S. Kivu	Bagira	22	8		8		1	4	5	2										
S. Kivu	Kifitu	26	9	3	23	1	1	4	5	2	1	2	1	2	1	0	0			
S. Kivu	Lulingu	15	9	3	20	1	1	4	4	2	1	2	2	2	1	0	0			
S. Kivu	Kalole	15	9	3	25		1	4	4	2	0	3	2	2	1	0	0			
S. Kivu	Shabunda	21	8	3	18	1	1	4	4	2										
S. Kivu	Mulungu	22	9	3	21	1	1	4	4	2	1	2	2	2	1	0	0			
Distributed to HZs			174	42	343	16	14	90	98	44	6	44	34	32	15	9	0	591	350	
Quantity Received by CRS			174	42	343	16	14	90	98	44	6	44	34	32	15	9	0	600	351	
Balance			174	0	0	0	0	0	0	0	0	0	0	0	0	0	0	9	1	
% Distributed			100%	100%	100%	100%	100%	100%	100%	100%	100%	100%	100%	100%	100%	100%	#DIV/0!	99%	100%	
Katanga	Kanzenze	15	4	2	14	0	0	2	3	3	1	4	2	1	1	1	0	31	16	
Katanga	Bunkeya	7	4	2	7	0	0	2	5	3	0	3	2	1	0	1	0	15	7	
Katanga	Mutshatsha	13	4	0	13	0	0	2	8	3	0	2	2	1	0	1	0	27	15	
Katanga	Luslaba	14	3	2	14	0	1	2	8	2	0	1	1	0	1	1	0	29	16	
Katanga	Lubudi	16	5	0	16	0	0	2	7	3	1	3	2	1	0	1	0	33	14	
Katanga	Fungurume	11	4	2	15	1	1	2	8	3	0	2	2	1	0	1	0	37	13	
Katanga	Dalala	10	5	0	10	0	0	3	3	2	0	0	1	1	0	1	0	40	13	
Katanga	Manika	13	5	0	15	1	0	7	3	3	1	4	2	1	1	1	0	27	15	
S. Kivu	Kalonge	15	8	3	18	0	1	5	5	0								25	14	
S. Kivu	Kalche	10	8	2	11	0	0	4	4	0								25	9	
S. Kivu	Minova	10	8	2	15	0	0	4	4	0								25	13	
S. Kivu	Bunyakiri	23	8	3	25	1	1	5	5	0	1	2	2	0	1	0	0	25	20	
S. Kivu	Katana	16	8	2	17	0	0	4	4	0								28	15	
S. Kivu	Miti	17	8	2	17	0	0	4	4	0								25	14	
S. Kivu	Ildjwi	21	8	2	22	0	0	5	5	0	1	3	2	0	1	0	0	25	18	
Distributed to HZs			90	24	229	3	4	53	76	22	5	34	23	7	7	8	0	417	212	
Quantity Received by WVI			120	33	244	3	4	54	76	22	5	35	29	9	7	8	0	439	239	
Balance			30	9	15	0	0	1	0	0	0	1	6	2	0	0	0	22	27	
% Distributed			75%	73%	94%	100%	100%	98%	100%	100%	100%	97%	79%	78%	100%	100%	#DIV/0!	95%	89%	
K. Oc.	Tshikaji	12	4	2	12	0	1	4	4	0	1	1	2	2	0	0	0	25	0	
K. Oc.	Bulape	15	4	2	15	0	0	4	4	0	0	2	2	2	1	0	0	31	0	
K. Oc.	Mutoto	13	4	2	13	0	1	4	4	4	1	2	3	2	1	0	0	27	0	
K. Oc.	Lubondai	19	4	2	26	0	1	4	4	2	0	2	1	2	1	0	0	39	0	
K. Or.	Bibanga	14	4	2	15	0	0	4	4	2	0	2	2	1	1	0	0	29	0	
K. Or.	Mpokolo	15	4	2	20	1	1	4	5	4	1	2	3	2	1	0	0	29	0	
K. Or.	Dibindi	13	4	2	16	1	1	4	4	0	1	1	1	1	1	0	0	0	0	
K. Or.	Lodja	22	5	2	16	1	1	4	4	0	1	1	1	1	1	0	0	44	0	
K. Or.	Lusambo	13	4	2	21	1	1	4	4	1	1	1	1	1	1	0	0	0	0	
K. Or.	Omcndjadi	18	4	2	16	1	1	4	4	0	1	2	2	1	1	0	0	44	0	
K. Or.	Pania Mutombo	10	4	2	21	1	1	4	4	1	1	1	1	1	1	0	0	0	0	
K. Or.	Vanga Kete Oto	17	5	2	16	1	1	4	4	0	1	2	2	1	1	0	0	44	0	
Katanga	Mulongo	25	4	2	17	0	0	4	4	3	0	1	1	1	1	0	0	33	0	
Katanga	Kavamba	20	5	2	25	1	1	4	5	3	0	2	2	2	1	0	0	27	0	
Katanga	Lwamba	23	5	2	9	1	0	4	4	3	0	2	3	1	1	0	0	17	0	
Katanga	Songa	15	4	2	30	0	1	4	5	4	0	3	2	1	0	0	0	58	0	
Katanga	Malamba Nkulu	7	5	2	18	1	1	4	4	1	0	2	3	1	1	0	0	33	0	
Katanga	Mukanga	13	4	2	17	1	1	4	4	2	0	2	3	2	1	0	0	33	0	
Katanga	Kubongo	14	5	2	28	1	1	4	4	3	1	2	2	3	1	0	0	51	0	
Katanga	Kitenge	16	5	2	21	1	1	4	5	3	1	2	3	2	1	0	0	41	0	
Katanga	Kimondja	18	5	2	25	0	0	4	4	3	0	3	2	2	1	0	0	47	0	
Distributed to HZs			92	42	395	13	16	84	88	39	11	38	42	32	18	0	0	652	0	
Quantity Received by ECC			92	42	395	13	16	84	88	39	11	38	42	32	18	0	0	652	350	
Balance			0	0	0	0	0	0	0	0	0	0	0	0	0	0	0	0	350	0
% Distributed			100%	100%	100%	100%	100%	100%	100%	100%	100%	100%	100%	100%	100%	#DIV/0!	#DIV/0!	100%	0%	
Distributed to HZs			356	108	967	32	34	227	262	105	22	116	99	71	40	17	0	1660	562	
Quantity Received			386	117	982	32	34	228	262	105	22	117	105	73	40	17	0	1691	940	
Balance			204	9	15	0	0	1	0	0	0	1	6	2	0	0	0	31	378	
% Distributed			92%	92%	98%	100%	100%	100%	100%	100%	99%	94%	97%	100%	100%	#DIV/0!	98%	60%		
Average/HZ			6	2	17	1	1	4	5	2	0	2	2	1	1	0	0	29	10	